


2022-23
SEASON



CLYBOURNE
P**ARK**

BY BRUCE NORRIS
DIRECTED BY KURT NAEBIG



SEASON'S
GREETINGS

by Alan Ayckbourn | Directed by Connie Canaday Howard

Andy Warhol's

TOMATO

by Vince Melocchi | Directed by Steve Scott





Dear Friends of BTE,

“I think one of the things that makes theater special is first of all, it’s one of the last places you put your phone away. And second of all, it’s one of the last places where we all have a common experience together.” Lin-Manuel Miranda

Welcome to Buffalo Theatre Ensemble’s 36th Anniversary Season!

We believe deeply in the common, immediate and ephemeral, shared experience of theatre, and are so happy you are joining us – some of you continuing your commitment to theatre and to BTE in the coming year, and some of you joining our ‘family’ for the first time. We’re excited to share with you these three productions, told from very different perspectives, which are engaging, at times humorous and thought-provoking. We so appreciate you, our subscribers, who are our extended family – and we look forward to the coming season with much excitement and joy.

We will continue to place at the highest priority the safety of both our audience and our artists, and will post any guidelines that may be necessary, based on the evolving standards of the Centers of Disease Control and Prevention, the State of Illinois, the McAninch Arts Center/College of DuPage, and with those with whom we contract. Please check both atthemac.org and btechicago.com for up-to-date information, moving forward.

Sincerely,

The Ensemble

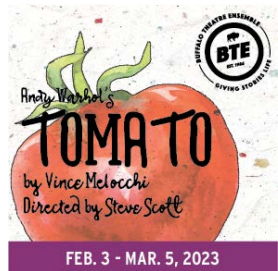
Aly Renee Amidei^, Robert Jordan Bailey*, Amelia Barrett* (Associate Artistic Director), Bryan Burke* (Business Manager), Robyn Coffin, Rebecca Cox, Lisa Dawn, Nick DuFloth, Jon Gantt, Loretta Hauser, Connie Canaday Howard* (Managing Artistic Director), Christopher Kriz^, Michael W. Moon, Kurt Naebig*, Laura Leonardo Ownby, Galen G. Ramsey*, William “Sandy” Smillie, Kelli Walker and Norm Woodel. For more information about BTE, visit btechicago.com.

BTE Board of Directors: Robert Jordan Bailey, Amelia Barrett, Connie Canaday Howard, Lisa Dawn (Secretary), Ted Donner (Vice President), Richard Jarman (Treasurer), Elyse Kennard, Laura Leonardo Ownby, Brandee Martin-Horton (President), Michael J. McCoy.

Legal Counsel: Gerry Cassioppi

Members Emeriti: Robert Cappetta, Peggy Connolly, Rebecca Cox, Ida Hagman, Diane Hicks, Joan Morrissey, Kurt Naebig, Carolyn Oesterle, John K. Rutledge, Sandra Sansone Brennan, Collen Trinko, Kelli Walker, Kathy Wessel, Bonnie Wheaton, Richard Wilders, Norm Woodel, Mary Ann Zlotow

* Member of Actors’ Equity Association, the Union of Professional Actors and Stage Managers
^ Member of United Scenic Artists, Local 829



Buffalo Theatre Ensemble Presents

Clybourne Park

by **Bruce Norris**

Director
Kurt Naebig+*

Scenic Design
Sarah Lewis

Lighting Design
Garrett Bell

*Costume and
Makeup Design*
Kimberly G. Morris

*Original Music and
Sound Design*
Christopher Kriz+^

*Properties
Design*
Rachel Lambert

Managing Artistic Director
Connie Canaday Howard+*

Associate Artistic Director
Amelia Barrett+*

CAST

Russ/Dan Bryan Burke +*
Bev/Kathy Kelli Walker+
Francine/Lena Raina Lynn
Jim/Tom/Kenneth Harrison Weger
Albert/Kevin Jamie Black
Karl/Steve Zak Wilson
Betsy/Lindsey Lisa Dawn+

Place: Chicago, Illinois **Time:** Act I, 1959; Act II, 2009

There will be a 15 minute intermission.

Please note: *Adult themes and language used during the show.*

*Presented by arrangement with **Dramatists Play Service, Inc.***

*Originally was produced on Broadway by Jujamcyn Theaters
at The Walter Kerr Theatre, 2012*

*Playwrights Horizons, Inc. New York City, produced by
the World Premiere of Clybourne Park Off Broadway in 2010*

The use of any recording device, either audio or video, and the taking of photographs, either with or without a flash is strictly prohibited. Please turn off all electronic devices, such as cell phones and watches.



Sep. 8 - Oct. 9, 2022 | Playhouse Theatre

PRODUCTION STAFF

Stage Manager Sarah West*
 Assistant Stage Manager..... Christopher Lindquist
 BTE Stage Management Scholar Brandon Luna◊
 Violence Director Neil Massey‡
 ASL Interpreter/Coach Marijo Fiacchino
 ASL Interpreter..... Daniel Englund
 Charge Artists..... Brett Baleskie, Natalie Fitz
 Assistant Lighting Designer Sophia Holtwilson
 Technical Director David Makuch
 Scene Shop Manager Sabrina Zeidler
 Scenic and Lighting Technicians..... Reet Bhasin, Anthony Rosalia,
 Emily Sheehan, Jillian Todd, Kris Trapani,
 Vinny Scanio, Garrett Wong, Chris Yee
 Costume Shop Manager..... Kimberly G. Morris
 Assistant Costume Shop Manager Gretchen Woodley
 Costume Shop Assistants Rowan Brando#, Eleanor Evans,
 Katie Gibson, Vinny Scanio, Chris Yee
 COVID Safety Managers Amelia Barrett*+,
 Connie Canaday Howard*+, Christopher Lindquist

+ Member of Buffalo Theatre Ensemble

* Member of Actors' Equity Association, the Union of Professional Actors and Stage Managers

^ Member of United Scenic Artists, Local 829

‡Member of Society of American Fight Directors

◊ BTE Stage Management Scholarship Recipient

2021 John Belushi/Second City Theater Scholarship recipient



Cleve Carney Museum of Art

Erin Washington
September 10 - November 20



Edra Soto
December 10 - March 5



TheCCMA.org

Arts DuPage

A DuPage Foundation Initiative



artsdupage.org



facebook/ArtsDuPage



@ArtsDuPage



**#Art
Happens
Here**



DuPage
Foundation **DF**[®]
Doing a world of good in our own backyard[®]

dupagefoundation.org | 630.665.5556

DIRECTOR'S NOTE

Bruce Norris' play *Clybourne Park* has got heart, a reason, guts, outrageous comedy and the ability to surprise people and leave them talking about what they saw as they leave the theatre and head home.

Norris, known for his willingness to skewer everybody and everything brings his finest writing to this Tony and Pulitzer Prize winning show.

The writer, who says he first experienced the 20th century classic, *A Raisin in the Sun* by Lorraine Hansberry in a 7th grade classroom, sets his show in the very house that Hansberry's family "the Youngers" have just purchased. Except now we are seeing it from the other side.

50 years later the house gets sold again and we are back on the inside again.

Each time I read *Clybourne Park*, I come away with something wholly different. That is a hallmark of great theater. And something that needs to be shared. Welcome...and enjoy the ride.

~KN

Acknowledgements

Buffalo Theatre Ensemble is partially supported and funded by generous grants from The DuPage Foundation, Benevity, Choose DuPage, The Norm Woodel Inspiration Fund, The Illinois Arts Council, and a gift from Dr. Thomas R. Scott and the late Shirley Klein Scott of Glen Ellyn through the College of DuPage Foundation and the generous support of the College of DuPage Trustees.



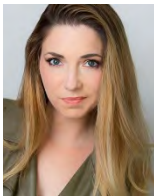
CAST PROFILES



Jamie Black (Albert/Kevin) is thrilled to be making his Buffalo Theatre Ensemble debut. Previous credits include *Emma's Child* and *Voice of Good Hope* with City Lit Theater and *November* with Habakkuk Theatre. Black is an award-winning writer and actor for his solo show *It's My Penis and I'll Cry If I Want To*. He can be seen in the award-winning web series *Assigned Female at Birth (AFAB)*. His most recent television role was as Carl on *Work In Progress*. He teaches on-camera at Actors Training Center and coaches the speech team at Mt. Carmel High School. Thank you to everyone for your support.



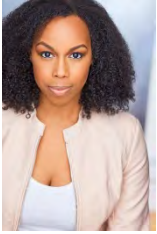
Bryan Burke+* (Russ/Dan) is a member of Buffalo Theatre Ensemble. Burke's acting credits include the Jeff-recommended productions of *The Cake* (Tim), *Defiance* (Col. Littlefield), *The 39 Steps* (Richard Hannay) and *Good People* (Mike), as well as *Red White and Blacklisted* (Christopher Trumbo), *Leading Ladies* (Leo), *Moon Over Buffalo* (George), *Faith Healer* (Frank), *Frankie and Johnny in the Clair de Lune* (Johnny), *Italian-American Reconciliation* (Huey), *Sleuth* (Andrew Wyke), *The Melville Boys* (Lee), *Noises Off* (Frederick Fellows/ Phillip Brent) and *Visiting Mr. Green*. Other acting credits include *The Trip to Bountiful*, *The Lonesome West*, *Cat on a Hot Tin Roof*, *The Living*, *Picasso at the Lapin Agile*, *Look Homeward Angel*, *Warrior* and *Hamlet*. Burke also directed *Frozen*, *Shining City*, *Love Song*, *Stones in His Pockets*, *The Weir* and *Three Days of Rain* for BTE. College of DuPage directing credits include *Defying Gravity*, *Anton in Show Business*, *The Laramie Project*, and *The House of Ramon Iglesia*. Burke was also a founding member of Chicago's Cactus Theatre Company. Acting credits with The Cactus Theatre Company include *Golden Boy*, *Fishing*, *Paradise Lost* and *Waiting for Lefty*. He also directed their productions of *Hurly Burly* and *Valentine's Day*. Burke holds a BGS degree in Theatre from the University of Kansas. He is also a member of Actors' Equity Association.



Lisa Dawn+ (Betsy/Lindsey) is proud to be a member of Buffalo Theatre Ensemble, and in 2020 she was nominated for an Equity Jeff Award for her performance in BTE's *The Cake*. Other BTE credits: *Naperville*, *Time Stands Still*, *Shining City*, *Blithe Spirit*, and *The Ding Dong*. Over quarantine, she was seen at the drive-in and streaming online in Oil Lamp Theatre's one-woman show, *Bad Dates*. Acting/directing in Chicagoland for over two decades, Dawn also traveled to Los Angeles to portray Jess in Ken

CAST PROFILES

Kaden's adaptation of Nick Hornby's novel, *A Long Way Down*. She also travels all over Illinois as an instructor/improv actress with Crisis Intervention Training, where the focus is training officers to help advocate for those struggling with mental illness. Other favorite credits: *Communicating Doors* (Poopay); *Much Ado About Nothing* (Beatrice); *A Midsummer Night's Dream* (Puck); *The Elephant Man* (Mrs. Kendal); *You're a Good Man Charlie Brown* (Snoopy); *Crimes of the Heart* (Meg); and *The 39 Steps*. Directing credits: *Wit*, *Steel Magnolias*, and *The Boys Next Door*.



Raina Lynn (Francine/Lena) is excited to return to the stage with BTE and this fabulous cast. She has performed in a variety of plays in the Chicagoland area, including Jeff Recommended shows *Good People* and *The Cake* (Buffalo Theatre Ensemble) and *Wedding Band: A Love/Hate Story in Black and White* (The Artistic Home). Other credits include Shakespeare's *Love's Labor's Lost* (Invictus Theatre) and *Comfort Stew* (ETA Theatre), where she received a nomination for the African American Arts Alliance award for Outstanding Actress. When not on stage, Lynn enjoys recording voiceovers and working on camera. Visit www.RainaLynn.com for more info.



Kelli Walker+ (Bev/Kathy) has appeared in *Naperville*, *Miracle on South Division Street*, *The Ding Dong*, *Outside Mullingar*, *Good People*, *The Underpants*, *Frozen*, and *Love Song* (Buffalo Theatre Ensemble, ensemble member); *The Humans* (Redtwist Theatre); *A Doll's House* (Raven Theatre); *Roast* and *In the Wake* (The Comrades); *R&J: The Vineyard* (Red Theater Chicago); *Angry F*gs* (Steppenwolf Garage/Pride Films and Plays). Understudy roles include *For Peter Pan on Her 70th Birthday* (Shattered Globe); *Roz and Ray* (Victory Gardens Theater); *Caught and Stupid F#cking Bird* (Sideshow Theatre Company). Select Indianapolis credits include *Stuff Happens*, *Boston Marriage*, *Proof*, *The Vagina Monologues*, and the one-woman show *Callie's Tally* (Phoenix Theatre); *The Living*, *Arms and the Man*, and *Romeo and Juliet* (Edyvean Repertory Theatre); *Wit* (Purdue University symposium with Pulitzer Prize-winning playwright Margaret Edson). Walker graduated from Butler University.

CAST PROFILES



Harrison Weger (Jim/Tom/Kenneth) is proud to be making his return to Buffalo Theatre Ensemble! He was previously seen in BTE's production of *Defiance*, portraying the role of Private Evan Davis. Chicago credits include: *I Am Not Your Perfect Mexican Daughter* (Steppenwolf Theater); *Proof* (MadKap Productions); *Fight City* and *Born Ready* (Factory Theater); *Scarcity* (Redtwist Theatre); *Charlotte's Web* (Emerald City Theatre). TV credits include: *Chicago Fire*. Harrison received his BFA in Acting from DePaul University.

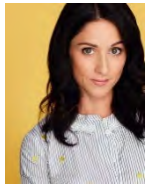


Zak Wilson (Karl/Steve) is thrilled to be making his Buffalo Theatre Ensemble debut! A graduate of the Florida State/Asolo Conservatory for Actor Training, he would like to thank Buffalo Theatre Ensemble for the opportunity and for fostering such a delightful environment in which to work, and his therapist for helping him get back to his *raison d'être*.

UNDERSTUDY PROFILES



Dustin Ayers (Understudy: Jim/Tom/Kenneth) is grateful to be a part of this BTE production for his return to acting after 15 years. He is a graduate of the Conservatory Theatre program at Roosevelt University. He was last seen in seasons with Tinfish Theater, which included the roles of Roger in *The Balcony*, Leon in *Fools*, Hally in *Master Harold and the Boys*, and Yvan in *Art*. He would like to thank Connie Canaday Howard for this opportunity and his wife Jamie Ayers for her love and support.



Shannon Bachelder (Understudy: Betsy/Lindsey) is excited to again be working with BTE, having been a part of their student shadow program where she was an actor shadow in 2017 for *Improbable Fiction* and a directing shadow in 2018 for *Time Stands Still*. She last appeared onstage in the Playhouse as Edith Frank in the college's 2018 production of *The Diary of Anne Frank*. Bachelder currently resides in Chicago where she continues to pursue her acting dream! She most recently appeared in PrideArts production of *When There Are Nine* and as Trish in Neal Show's production of *Death Is So Much Worse*. Other credits include *Wit and Murdered to Death* (Wheaton Drama) and *Becky's New Car* (Village Theatre Guild).

UNDERSTUDY PROFILES



Scott Lynch-Giddings (Understudy: Russ/Dan) most recently played a time traveling music teacher in *Now & Then* at Theatre of Western Springs. Favorite roles include all seven men in *The Heidi Chronicles* (National Jewish Theatre) and all 29 men, women, and children in *A One-Man Christmas Carol* (MVCC). Plays of his own include *Argonauts*, a comedy for young people that has been widely staged from Theatre 360 in Pasadena to the Latymer School in London.



Brian Kulaga (Understudy: Karl/Steve) is extremely excited to be working in the theatre again, especially with Buffalo Theatre Ensemble. He has performed at a number of Chicagoland theatre companies including: Pride Films & Plays, Chicago Theatre Workshop, Northbrook Theatre, Chicago Kids Company, The Factory Theatre, and Raven Theatre. He'd like to thank the headquarters crew for their big love, relentless support, and for making him a better human.



Charles Loggins III (Understudy: Albert/Kevin) has performed in a number of shows throughout the Chicago area for over 18 years working with different theatre companies like ETA Creative Arts Foundation and Chemically Imbalanced Comedy (CIC) Theater. This is his third production with the Buffalo Theatre Ensemble having understudying in *Naperville* (2022) and *Defiance* (2019).



Tina Shelley (Understudy: Bev/Kathy) is thrilled to be working with BTE. Favorite stage roles include: Jo in *Nice Girl*, Corryn in *Gideon's Knot*, Veronica in *God of Carnage*, and Mama in *Distracted*. TV/Film Credits: *Torque* and *America's Most Wanted*. She is the Artistic Director at Habakkuk Theatre. www.tinashelley.net



Kiara Wolfe (Understudy: Francine/Lena) is a Chicago based actress and co-founder of the Chicago based film production company, Reel Oddity. Other professional credits include: Assistant Stage Manager for *Lizette Dances Divine*. Professional acting credits include *The Children's Hour*, *Frankenstein*, *A Piece of My Heart*, *Take Me Out*, *Fasting Cougars*, *The Government Inspector* and *She Kills Monsters*. Film credits include *Mia and the Wolf*, *The In Between* and *Twice in a Lifetime*. She is an actor combatant and is delighted to be back in Chicago after being discharged from the USMC.

CREATIVE PROFILES

Kurt Naebig+* (Director) has worked professionally in theatre, film, television and radio for more than 30 years, and has been teaching and coaching actors since 1992. A Juilliard graduate, he has also studied at the Moscow School of the Arts in Russia. Naebig is the former Artistic Director of The Theatre of Western Springs, a member of Buffalo Theatre Ensemble and has worked as an actor at Portland Stage, Milwaukee's Pabst Theatre, National Jewish Theater, Steppenwolf Theatre and Chicago Shakespeare Theatre. Naebig is a playwright and his solo show *Stove Toucher* was performed by him at Buffalo Theatre Ensemble last fall. He also appeared in such films as *Public Enemies*, *The Express*, *Witless Protection*, *Henry: Portrait of a Serial Killer*, *The Relic*, *Dillinger*, *Howard Beach: Making the Case for Murder*, and has been seen in the television shows *Fargo*, *A League of Their Own*, *Empire*, *APB*, *Sense8*, *Chicago Code*, *Detroit 1-8-7* and multiple episodes of *Chicago PD*, *Chicago Fire*, *ER* and *Prison Break*. Naebig has directed multiple seasons of *VC - The Webseries*. He has also directed *Naperville*, *Defiance*, *The 39 Steps*, *Don't Dress For Dinner*, *The Drawer Boy*, *Trumbo: Red White and Blacklisted*, and *Leading Ladies* at Buffalo Theatre Ensemble. Visit him at www.kurtnaebig.com

Garrett Bell (Lighting Design) is excited to be joining Buffalo Theatre Ensemble again for *Clybourne Park*. Recent local lighting design credits include *Naperville* with Buffalo Theatre Ensemble, *Future Perfect* with Bellissima Opera, and *The Madness of Edgar Allan Poe: A Love Story* (Associate) with Oak Park Festival Theatre. Other recent credits include the world premiere of *A Hidden Life* at PURE Theatre in Charleston, South Carolina, and *Tecumseh!* in Chillicothe, Ohio. More of Bell's work can be found at www.garrettbell.com

Connie Canaday Howard+* (BTE Managing Artistic Director) has directed numerous BTE productions including *Good People*, *Time Stands Still*, *Noises Off*, *Into the Woods*, *Dancing at Lughnasa*, *The Mystery of Irma Vep*, *Rabbit Hole* and *Frankie and Johnny in the Claire de Lune*. Favorite BTE acting roles have been Della in *The Cake*, Annie in *The Real Thing*, Harper in *Angels in America*, Nancy in *Frozen* and Ruella in *Communicating Doors*. Canaday Howard is a member of Actors' Equity, and is on the Artistic Team of the Jeff Committee. She holds an MFA in directing, and has worked regionally with Three Rivers Shakespeare Festival, City Theatre Company, Belvoir Terrace, Drama Workshop, Down River Dinner Theatre, Ingersoll Theatre, Charlie's Showplace, and tours of both theater and dance, as well as helping to create and perform several improvisational shows. She was the state-wide co-chair of the Theatre Panel for Illinois Articulation Initiative for more than 15 years. Canaday Howard was Chair of the Theatre Department

CREATIVE PROFILES

at the College of DuPage until her retirement in 2022, and was honored as COD's Outstanding Faculty for 2003–2004.

Christopher Kriz +^ (Original Music and Sound Design) is an award winning composer and sound designer based in Chicago. Previous BTE designs include *The 39 Steps* (Jeff Nomination), *Naperville*, *The Cake*, *Holmes and Watson*, *Time Stands Still*, and dozens of others. Chicago: Goodman Theatre, Steppenwolf, Chicago Shakespeare, Chicago Symphony Orchestra, Court Theatre, Northlight Theatre, Writers Theatre, Remy Bumppo, Victory Gardens, Timeline Theatre, The Gift Theatre, and many others. Regional: Seattle Repertory Theatre, Kansas City Repertory Theatre, Indiana Repertory Theatre, Alabama Shakespeare Festival, Crossroads Theatre, Montana Shakespeare, TheatreSquared, Michigan Shakespeare Festival, and others. A winner of five Joseph Jefferson Awards, Kriz is a proud member of United Scenic Artists 829. To hear more of his work, please visit christopherkriz.com

Rachel Lambert (Properties Design) is so happy to be working with Buffalo Theatre Ensemble again. She is a freelance costume and props designer in Chicago whose previous credits include work with Goodman Theatre, The Second City, Northlight Theatre, Remy Bumppo Theatre, First Folio, The Gift, Eclipse Theatre, Redtwist, DePaul School of Music, Greenhouse Theatre, BoHo Theatre, Underscore Theatre, Signal Ensemble, and American Blues Theatre. She has been nominated for five Jeff awards. Regionally she has designed for Peninsula Players and the Texas Shakespeare Festival.

Sarah Lewis (Scenic Design) is thrilled to return to Buffalo Theatre Ensemble where she designed *Naperville*, *Miracle on South Division Street* and *39 Steps*. Some of her credits include *Emma*, *Arnie the Doughnut*, *Northanger Abby* (Lifeline Theatre), *Steel Magnolias* (Big Noise Theatre), *Darkness after Dawn*, *Fight City* (The Factory Theater). Lewis is currently the Assistant Charge Scenic Artist at Steppenwolf Theater Company. Her work can be seen at sarahdaltonlewis.com

Kimberly G. Morris (Costume and Hair/Makeup Design) is excited to work again with Buffalo Theatre Ensemble. Based in Wheaton, she is the costume, hair and makeup designer for the College of DuPage. Favorite past projects; recreating five outfits worn by Frida Kahlo for the Frida Kahlo Timeless exhibit at the CCMA at COD. Puppet design/build of Allan the dog for the movie *Allan the Dog*. Costumes for *The Merry Widow*, *The Mikado* and *La Traviata* with New Philharmonic. Props design for *100 Dresses* and A

CREATIVE PROFILES

Year with Frog and Toad with Chicago Children's Theatre. Costume and puppet design for *Blue Planet* with Akvavit Theatre. Puppet, mask and costume design for *Neverwhere* and *Island of Dr. Moreau* with Lifeline Theatre. Upcoming projects include *The Born Yesterday*, and *A Christmas Carol* with College of DuPage, and garments for the WARHOL exhibit coming 2023 at the CCMA.

PRODUCTION PROFILES

Sarah West* (Stage Manager) is pleased to be back at Buffalo Theatre Ensemble. Previously at BTE she worked on the premiere of *Stove Toucher*. She is an Artistic Associate at First Folio Theatre, where credits include *Mary's Wedding*, *Women in Jeopardy*, *As You Like It*, *Silent Sky*, *Captain Blood*, *Dr. Seward's Dracula*, *A Midsummer Night's Dream*, *The Amish Project*, *Jeeves at Sea*, *The Madness of Edgar Allan Poe*, *Laughter on the 23rd Floor*, *The Gravedigger*, *The Merry Wives of Windsor*, *Salvage*, *Rough Crossing*, *The Rainmaker*, *Unnecessary Farce*, *Searching for Peabody's Tomb* and *Macbeth*. Other credits include Oak Park Festival Theatre (*Edgar Allan Poe: A Love Story* 2019 and 2021), United Solo at Stage 773 (*Tall Boy*), Mercury Theatre (*Mary Poppins*), Babes with Blades (*Women of 4G*), and Capital City Theatre (*25th Annual Putnam County Spelling Bee*). She is a proud graduate of North Central College.

Christopher Lindquist (Assistant Stage Manager/COVID Safety Manager) is a recent graduate of the University of Wisconsin- Eau Claire. He is ecstatic to be making his professional debut with Buffalo Theatre Ensemble. His favorite credits include *Peter and the Starcatcher* (Assistant Director) and *Head Over Heels* (Stage Manager) at UWEC, and *Godspell* (Ensemble) while attending COD.

Brandon Luna◇ (BTE Assistant Stage Manager Scholar) First production with BTE and first time working in stage management. Luna has also acted and worked in many productions over the years, most recently in COD's *The SpongeBob Musical* (Eugene H. Krabs). Favorite past credits include *Smokefall* (Colonel/Johnny), *The Elephant Man* (John Merrick) at Glenbard North High School Theatre and *She Kills Monsters* (Orcus/Ronnie) at COD. Luna is a 2022 BTE Stage Management Scholarship recipient, as well as a 2017 Illinois High School Theatre Festival participant and a 2018 Charles A. Berglund Scholarship for education in the performing arts recipient.

+ Member of Buffalo Theatre Ensemble

* Member of Actors' Equity Association, the Union of Professional Actors and Stage Managers

^ Member of United Scenic Artists, Local 829

◇ BTE Stage Management Scholarship Recipient

The MAC offers all of this for you,
but we can't do it without you!



**YOUR GIFT HELPS PROVIDE CULTURAL VITALITY
THAT ENRICHES AND ENTERTAINS!**



GIVE TODAY! TO SUPPORT THE MAC,
visit us at foundation.cod.edu or call (630) 942-3088



**College of DuPage
FOUNDATION**

(630) 942-3088 | foundation@codfound.org | foundation.cod.edu



CHICAGO'S HOME FOR JAZZ AND BLUES

... and more!

www.WDCB.org

MAKE MUSIC WHERE MUSIC THRIVES

College of DuPage brings 50 years of training and supporting musicians like you in whatever it is you want to do. With a staff of 25 private music instructors, nine ensembles, and four degree and certificate programs, COD is the first choice of serious musicians from the western suburbs and beyond.

For more information

Contact Thomas Stark at (630) 942-2391 or starkt1620@cod.edu.

For ADA accommodations, please email access@cod.edu with the event title in the subject line and your accommodation request. Please email two weeks in advance.

 **College of DuPage**



Buffalo Theatre Ensemble (“BTE”) is a 501(c)(3) not for profit, professional theatre company in residence at the McAninch Arts Center (“MAC”) on the campus of College of DuPage.

Ticket revenue only covers a portion of Buffalo Theatre Ensemble’s operating expenses. The rest must be raised through contributions, the majority of which comes in the form of gifts from individuals like you.

It’s because of our close circle of friends that BTE is able to return and explore new ideas and provocative issues through the production of professional, high quality theater for the enjoyment of its audiences.

The resident ensemble brings professional theater to DuPage County and at the same time enhances the training of students in Theater at College of DuPage, providing opportunities for students to develop their talents alongside working theater artists.

We invite you to become a part of this family of supporters by joining the **Friends of Buffalo Theatre Ensemble**. Make checks payable to Buffalo Theatre Ensemble [BTE, PO Box 2608, Glen Ellyn, IL 60138] or donate through PayPal <https://www.paypal.com/us/fundraiser/charity/2042520> or go to btechicago.com and select donate.

With a financial commitment of \$500 or more, donors help bring our stories to life by “sponsoring” an Ensemble member for the season. Sponsorship includes:

- Recognition in show program for entire season
- Two additional complimentary tickets to the show of donor’s choice
- One-on-one visit with “your artist” (at a mutually agreed upon location such as the theatre, a coffee shop, or via Zoom)

Rising Star.....up to \$249
Director’s Circle.....\$250-\$499
Imaginer.....\$500-\$999

Dream Maker.....\$1000-\$2999
Benefactor.....\$3000+

*Buffalo Theatre Ensemble is a designated 501(c)(3) not-for-profit organization.
Your donation may be tax deductible to the extent permitted by law.
Please check with your tax advisor.*

FRIENDS OF BUFFALO THEATRE ENSEMBLE

For 36 years, **Buffalo Theatre Ensemble (BTE)** played a major role in the cultural community of College of DuPage and the surrounding area, through the marriage of committed permanent ensemble members, fine Chicagoland artists, and great theatrical works. We gratefully acknowledge the donors who have made it possible to return for our 36th season.

This list of donors reflects contributions made from **July 2017 through August 2022**. While we carefully prepared this listing, we recognize that errors may occur. Please accept our apology if you are not properly represented on this list and contact BTE at ab@btechicago.com so we may correct our records.

Benefactor (\$3000 and above)

Richard Bailey
Katherine Balek
Connie Canaday Howard
Cleve E. Carney Fund
Peggy Connolly
DuPage Foundation
Jean Hawkinson
Illinois Arts Council
Network for Good
Carolyn and Eric Oesterle
John K. and Betty Rutledge
Thomas Scott
Scott Vessely
Kathy Wessel
Donald Westlake
Norman Woodel

Dream Maker (\$1000–\$2999)

Mary Bacci and Renato Bacci Jr.
Amelia Barrett
Michael Boyna
Sharon Brockmeier
Kathleen Drennan
Dr. James and Judy Dunlap
Donald and Catherine Fischer
Friends Through Facebook
Phil Gelber
Ida Hagman
George and Mary Hall
Art Hirsch
Jessica Lippman
Maggie and Mike McCoy
Mrs. Joseph Morrissey
Karen Owen

William Raymond
Sandra Sansone Brennan
Nathan Schuette
Maureen and Terrence Taylor
Kelli Walker
Robert Wunderlich

Imaginer (\$500–\$999)

Brian Allendorfer
Lynette Arendt
Deborah Borge
Mary Sue Brown
Charles Buege
John E. and Suzanne R. Buntrock
Robert and Nancy Casey
James and Marie Drasal
Russel Flores
Kenneth and Debra Fulks
Glen Ellyn Chamber of Commerce
Jon and Ruth Good
Charles and Phyllis Goodman
Elizabeth, Brooke and Ayden Harrington
Bob and Sue Hartman
Richard Jarman
Cynthia Ann and Andrew Johnson
Charlene Kornoski-Duvall
Richard and Mary Kuhn
Larry Larson
Robert and Jean Lindsey
Harold and Karyl McAninich
Kathleen McCullough
John and Rita Meier
Jim and Lorraine Paulissen

Pamela Pipkin
William Podgorski
Tom and Karen Pulver
Merrill and Janet Rajek
Randy Johnson and Lisa Savegnago
Shanker Valleau Wealth Advisors
Kristin and Peter Shulman
James and Linda Smedinghoff
Gloria P. and Kennan Sullivan
Haruo Kurokawa and Hal Temple
Marcy and David Uphoff
Bonnie Wheaton
Mary Ann and Walt Zlotow

Director's Circle (\$250–\$499)

Bob and Betty Becker
Marcia and Arthur Burke
Robert Cappetta
Dr. and Mrs. Brian W. Caputo
Chipotle Community Roots
Michael Church
Lisa Crank
Robin Dye
Fran Kravitz and Daniel Edelman
Rebekah and Rodney Harris
Loretta Hauser
Nancy Headen
John and Emily Herndon
Jan T. and Kathryn Johansson
John J. Bryant Fund
Dennis Johnson
Barbara Kamm
Linda Kulikowski
Paul and Eileen Lefort

FRIENDS OF BUFFALO THEATRE ENSEMBLE

John Mategrano
 Michael McKeon
 Colleen and Dale Moir
 Carol and Michael Moon
 Michael J. and Melissa F.
 Nachman
 Jean R. and Joanne Oliphant
 Gwen O'Loughlin
 Linda Osanka
 Edward and Bernadine Pillar
 Barb and Doug Rundell
 Alfred and Lorraine Schuller
 Patricia and Richard
 Schwarze
 William Smillie
 Arnold R. and Susan M.
 Stenvog
 Nancy Svoboda
 Linda and Barry Tusin
 Larry Ward
 Rich and Kathy Wilders
 Jo Anne Zipperer

Rising Star (up to \$249)

Angela Abramite
 Anne Ahlert
 Mary Ahlert
 Michael Aikins
 Shamili Ajgaonkar
 Joyce Albi
 Peggy Aldworth
 Dave Amato
 Barbara and Lowell
 Anderson
 Ron and Judith Anderson
 Kathleen Andrade
 Christine Aument
 Shannon Bachelder
 Daniel Barnett
 Joy Barrell
 Dianne Batzkall
 Danny Bauer
 Carol and Johann Bayer
 Mark Begovich
 Susan Bell
 Kenneth and Annabel
 Bergman
 Blackbaud Giving Fund
 James Boves

Jo Brady-Papp
 Julie Breen
 Martha and Ray Bright
 Nancy Burke
 Edward Burton
 Patrick and Joanne
 Callahan
 Margaret Canon
 Maura Canzano
 Benjamin Caracello
 Mary Jane Chapman
 Toni Chapman
 Ray and Melissa Cliff
 Robyn Coffin
 Allison Cohen
 Patrice Conaway
 Michael Cornelia
 Shiela Cosco
 Winifred Creamer
 Kat Creedon
 Aaron Curran
 Lisa Dawn Curran
 John and Pamela Dalby
 Jeanne Davik
 Rhea Dawson
 Doreen Dawson-Kubiak
 Judith Decker
 Shirley A. Decorte
 Patrick Deering
 Edie Defast
 Rachel and Paul Dieterle
 Julia Dilberti
 Gary Dobson
 Glenn Domovic
 Ted Donner
 Sally and William Fairbank
 J.V. Figueredo
 Angela and James Frank
 Ken Frank
 Ruta Freimanis
 Barbara Fried
 Bonnie L. and Jeffrey L.
 Gahris
 Jon Gantt
 John Garceau
 Chris Gerrib
 Fran Gilles
 Peter Glassman
 Dawn Goldhirsh

John and Lisa Gorak
 Kathleen Graffam
 Kate Zoe Graham
 Steve Griegoliet
 James and Gail Hannon
 Gary Harper
 Susan Harris Mitchell
 Paul and Floy Haschke
 Carrie Hayden Cerri
 Edward M and Cindy L
 Hegarty
 James and Ann Helt
 Mark Hendrickson
 Diane Hicks
 Michelle Ho
 Ron and Valerie Hollaender
 Ralph and Dolores Holmen
 Rex Howard
 John C and Stephanie B
 Iglehart
 Carla Inwood
 Phyllis Janik
 Cassandra Johnson
 Dennis Johnson
 Matt Johnson
 Bernard Jokiel
 Charles and Margaret Jonah
 Benn Joseph
 Molly Junokas
 Kenneth Kaden
 Darlene Kaempfen
 Diane Kaercher
 Jill Kainu
 Susan Kerby
 Lee Kesselman
 Katelyn Kirby
 Sue Kirby Curtain
 Stephanie Kissam
 Debra Koster
 Karin Kramer
 John L. Ladle
 Eileen Landau
 Brad Lawrence
 Ida Lee
 Virginia Lennon
 Susan Levy-Creed
 Esther Loth
 Brandee Martin-Horton
 Diana Martinez

FRIENDS OF BUFFALO THEATRE ENSEMBLE

Jerry Marzullo
 David and Carolyn May
 Kathy McCutcheon
 Meg McGarry
 Ellen McGowan
 Jacqueline McGrath
 Maren McKellin
 Steven Merkel
 Daniel Millhouse
 David J. and Donna M.
 Millhouse
 James Milobowski
 Christine Monnier
 Thomas Montgomery Fate
 Frank Mraz
 John M. Mulherin
 Geoffrey Myers
 Jennifer Myers
 Kurt Naebig
 Donald and Mary Ellen
 Newsom
 Natalie Nimerala
 John L. Norton
 Oberweiss
 Kevin O'Brien
 Kelly O'Hanlon
 Jane Oldfield
 Lorayn Olson
 Betty O'Neill
 Kenneth Orenic
 Jeff Ownby
 Dean and Lisa Payton
 Debbie Penwarden-Roberts
 Michael Pesola
 Mark Pfefferman
 Judy Pitts
 Sarah and Roger Poeppel
 Cynthia and Thomas Power
 Kathryn Purdy
 Erin Ransford
 Mary Rash
 Sharon Reed
 Mary Ellen Reedy
 David Reimer
 Jen Riddle

Gail Robinson
 Judith Ronaldson
 Daniel F. and Barbara Roos
 Marlene and Robert
 Rosecrans
 Tina Rudins
 Kathy Schleicher
 Kathleen Schneider
 Tara Schram
 Susan Schurmeier
 Elizabeth Schwan-
 Rosenwald
 Steve Scott
 Paul Seidlitz
 Carol Shaffer
 Tina Shelley
 Delores Sieja
 Susan Simek
 Michael Sitrek
 Maureen and George
 Slater
 Andrew Spence
 Patricia Spence
 Jean Spitzer
 Rick Stack
 Donald Stading
 Louis and Marilyn Steenwyk
 James Stover
 Lorraine Subra
 Barbara and Thomas
 Suhrbur
 Guy Sullivan
 Jon Summerbell
 Helen Szymanski
 Kathleen Talenco
 Dr. and Mrs. Anthony Taylor
 Jean Tello
 George Tenne
 Cathy Tomasiewicz
 Mary Tortorello
 Mary Trecek
 Holly Trueblood
 James Trusdale
 Joseph and Mary Beth
 Turek

Amy Turner
 Antony Urso
 Margaret Urso
 Miriam Van Wassenhove
 Gale Vance
 John Vinopal
 Roy and Janice Wahnert
 Vince and Gloria Walsh-Rock
 Dianne Wawrzyniak
 James Weichel
 Bobbi and John Wheatley
 Tammy White
 Mary Wiesen
 Christopher Williams
 Tod D. Willman
 Elissa Wolf

Business Partners

Alpha Graphics of Wheaton
 chicagoismyboyfriend
 DuPage Convention and
 Visitors Bureau
 Elements Massage, Wheaton
 First Folio Theatre
 Glen Ellyn Chamber of
 Commerce
 Glen Ellyn Historical Society
 Ivy Restaurant
 Kids Science Labs, Wheaton
 Lady Gregory's Irish Pub, Chicago
 Parker's Restaurant and Bar
 Octavio Cantina & Kitchen,
 Chicago
 Orange Theory Fitness, Baker
 Hill Plaza, Glen Ellyn
 Outback Steakhouse,
 Downers Grove
 Santa Fe Restaurant of Glen
 Ellyn
 Silver Foxes Travel
 Wheaton Chamber of
 Commerce
 Wilde Bar & Restaurant,
 Chicago



BTE BOARD OF DIRECTORS

Brandee Martin-Horton (**President**), Ted Donner (**Vice President**), Lisa Dawn (**Secretary**), Richard Jarman (**Treasurer**), Robert Jordan Bailey, Amelia Barrett, Connie Canaday Howard Elyse Kennard, Laura Leonardo Ownby, Michael J. McCoy.

Legal Counsel: Gerry Cassioppi

Members Emeriti: Robert Cappetta, Peggy Connolly, Rebecca Cox, Ida Hagman, Diane Hicks, Joan Morrissey, Kurt Naebig, Carolyn Oesterle, John K. Rutledge, Sandra Sansone Brennan, Collen Trinko, Kelli Walker, Kathy Wessel, Bonnie Wheaton, Richard Wilders, Norm Woodel, Mary Ann Zlotow

STUDENT VOLUNTEERS

Mary Ahlert	Jacqueline Davis	Rachel Koshie Mills	Rebekah Szilagyi
Shannon Bachelder	Nathan Thomas	Renata Naomi	Aaron Taylor
Michael Bellino	Dittemore	Kailey Nelson	Brandon Torres
Brandon Michael	Elmeka Elme	Ethan Oakley	Stephanie Turner
Bunn	Brendan Flaherty	Auguste Pilelyte	Marissa Warner
Caroline Broderick	Trevor Frueh	Ryan Sinclair	Brendan Matthew
Benjamin Cardinal	Ed Garzaro	Gina Robertelli	Weaver
Cassie Collins	Ryan Gentile	Riley Skalski	Tenleigh Wells
Jack Columbo	Julie Good	Austin Slott	Patrick Wood
Anita Constabile	Kyle Krisch	Rachel Strolle	Owen Woodard
Nathan Cozzi	Dimitris Michelis	Tess Sundstrom	Caitlyn Woods

VOLUNTEERS

Peggy Aldworth	Julia DiLiberti	Mike McCoy	Erin Lynn Ransford
Quinn Bayola	Andrea Ficarelli	Caroline McGowan	Erica Sandvig
Debbie Borge	The Late Joan Frank	Isola Metz	Debbie Simpson
Bill Bulger	Ken Frank	Barb Murphy	Nancy Svoboda
Benjamin Caracello	Rex Howard	Elaine Patrick	Donald Westlake
Gayatri Choudhary	Paul LeFort	Tony Payne	Mary Ann Zlotow
Peggy Connolly	Brett Mathieson	Pam Pipkin	
Christopher Corrigan	Maggie McCoy	Lynda Pratscher	



btechicago.com



facebook.com/BuffaloTheatreEnsemble



[BTEattheMAC](https://twitter.com/BTEattheMAC)



When you shop at AmazonSmile and select Buffalo Theatre Ensemble Corp., You and Amazon donate to us!

HOUSE NOTES

- Cameras and recording devices are not allowed in the theater and are prohibited by our contracts with the artists.
- Smoking is not permitted in the theater or on campus.
- For your comfort and security, all backpacks and large bags must be checked.
- Please turn off all cell phones and any other alarms while in the theater.
- Emergency phone number at College of DuPage Police Department for after-hour calls is (630) 942-2000.
- Latecomers seated at discretion of the House Manager.
- Groups of 10 or more may contact Kat Kazmierski at (630) 942-3026 or kazmierskik@cod.edu to arrange for group discounts.
- If you notice a spill in the theater, please notify an usher.
- McAninch Arts Center volunteers are people who assist the house staff in areas of ticket taking, ushering and general management during performances. To get involved, call (630) 942-3705.
- **For Americans With Disabilities Act** accommodations, call (630) 942-2141 (voice) or (630) 858-9692 (TDD).
- **Infrared Assistive Listening Devices:** For audience members who desire audio amplification of performances, headsets with individual volume controls are now available. You may check out the headsets at the Box Office with a driver's license. *Underwritten by a generous gift from The Knowles Foundation.*

MAC STAFF LISTING

MAC Administrative Staff

Director of the McAninch Arts Center	Diana Martinez
Business Manager	Ellen McGowan
Assistant Business Managers	Molly Junokas, Kari Schoettle
Curator, Cleve Carney Museum of Art	Justin Witte
Assistant Curator	Julia Walker
Gallery Assistant	Maria VanDyken Li
Marketing and Patrons Services Coordinator	Janey Sarther
Education and Engagement Coordinator	Dawn Smith
Director of Development for Cultural Arts	Janie Oldfield
Graphic Design and Group Sales Coordinator	Kat Donaldson
Administrative Assistant	Mandy Rakow
Student Clerical Assistant	Annie Wagner

MAC Box Office and Front of House Staff

Box Office Manager	Julie Elges
Assistant Box Office Supervisors	Jim Gosling, Elise Wash
Box Office Assistants	Patrick Garon, Tatia Hegrans
Patron Services Manager	Tom Murray
Assistant Patron Services Supervisor	Deborah Kolek
Front of House Manager	Rob Nardini

MAC Resident Professional Ensembles

Buffalo Theatre Ensemble, Artistic Director	Connie Canaday Howard
Buffalo Theatre Ensemble, Associate Artistic Director	Amelia Barrett
Buffalo Theatre Ensemble, Business Manager	Bryan Burke
New Philharmonic, Music Director and Conductor	Kirk Muspratt
New Philharmonic, Associate Conductor and Librarian	Benjamin Nadel
New Philharmonic General Manager	Paula Cebula
New Philharmonic Personnel Manager	Karen Dickelman

MAC Design and Technical Staff

Technical Theater Assistant Coordinator	Sabrina Zeidler
Costume and Make-up Design Coordinator	Kimberly G. Morris
Assistant Costume Coordinator and Stitcher	Gretchen Woodley
Production Manager	Joe Hopper
Sound and Lighting Specialist	Ben Johnson
Lighting Production Specialist	Elias Morales
Audio Production Specialist	Fisher Parsons
Events Production Specialist	David Makuch
Stage Hand	Bobby Bryan



2022-23 DINING PARTNERS

WHERE
CULTURE AND
COMMUNITY
CONNECT



The MAC is thrilled to be partnering with neighborhood restaurants in our area. For your pre-show meals or post-show bites, these establishments provide MAC patrons with exclusive discounts and offers. Must present coupon and MAC ticket at restaurant prior to ordering. Valid only on day/night of MAC event.



535 W. Liberty Dr, Wheaton, IL 60187
(630) 784-8015

a toda madre

499 N Main St, Glen Ellyn, IL 60137
(630) 474-0969



1250 Roosevelt Rd, Glen Ellyn, IL 60137
(630) 613-1250



419 N Main St, Glen Ellyn, IL 60137
(630) 547-2180



WHEATON

401 Town Square, Wheaton, IL 60189
(630) 480-7347



AT THE VILLAGE LINKS

485 Winchell Way, Glen Ellyn, IL 60137
(630) 469-5550

Santa Fe
Mexican Restaurant

426 N Main St, Glen Ellyn, IL 60137
(630) 790-3311