

the
mac

IS BACK! IN PERSON

35th Anniversary Season



MIKE SUPER



DRUM TAO



THE OAK RIDGE BOYS

BODEANS



ABT STUDIO COMPANY

HEATHER HEADLEY





Dear MAC Friends!

I am so thrilled to be writing to you with the wonderful news that we are returning to in-person performances in time to celebrate our 35th anniversary together! We have [safety protocols](#) in place to help mitigate the spread of COVID-19, which you can read about on our website, atthemac.org. As the pandemic changes, so will our policies and we will keep you updated.

This season is packed with your favorites. Music fans will enjoy everything from electrifying BoDeans, to the legendary Oak Ridge Boys, to The Texas Tenors. Get ready for a Mardi Gras and Zydeco party with the Dirty Dozen Brass Band at Mardi Gras Mambo. I also look forward to sharing one of the most compelling concerts I've seen, in an evening with Tony Award-winning Broadway star, Heather Headley.

We are happy to remain the home of our resident companies Buffalo Theatre Ensemble and New Philharmonic. BTE brings live theater back with *Stove Toucher*, a one-man show written and performed by Kurt Naebig, and closes the season with *Naperville* by Mat Smart. New Philharmonic Orchestra and Maestro Muspratt are putting on a blockbuster season starting with a Spooktakular concert filled with themes from your favorite horror cinema classics, followed by American melodies in Dvořák's *New World Symphony* featuring the incomparable David Taylor playing one of the most complex violin pieces, culminating in a concert version of *West Side Story*.

Following the blockbuster Frida Kahlo exhibition this summer, the Cleve Carney Museum of Art will open its season with COD alum and brilliant contemporary artist Tony Fitzpatrick. We will close the MAC season in 2022 by bringing back the beloved free outdoor Lakeside Summer series!

We look forward to seeing you and engaging in thought-provoking, joy-inducing, exciting LIVE entertainment. I look forward to seeing you back at the MAC soon!

Enjoy the show!

Diana Martinez
Director, McAninch Arts Center

McAninch Arts Center
at College of DuPage
presents

Piaf! THE SHOW



Starring the internationally acclaimed
NATHALIE LERMITTE
as Édith Piaf

This program is partially supported by a grant from
the Illinois Arts Council Agency.



Friday, Feb. 11, 2022, 7:30 p.m.
Belushi Performance Hall

CAST

Nathalie Lermitte – Singer

Philippe Villa – Musical Director, Piano

Benoît Pierron – Percussion, Xylophone

Frédéric Viale - Accordion

Giliard Lopes - Double Bass

Thomas Richaux – Production Manager

Gil Marsalla – Producer, Director

ABOUT ÉDITH PIAF

Édith Piaf, real name Édith Giovanna Gassion, was born in Paris on December 19, 1915 and died in Grasse, France on October 11, 1963. She was a French cabaret singer songwriter. She is considered the archetype of French singers – a national treasure - and 50 years after her death, remains the most famous French performer both in France and throughout the world.

She became known as “la Môme Piaf” (“The Little Sparrow”) from an early age, due to her extreme stage fright and her small stature (she was only 4’8” tall) and performed songs which became great classics such as: *La Vie en Rose*, *N Non Je ne Regrette Rien*, *Hymne à l’Amour*, *Mon Légionnaire*, *La Foule*, *Milord*, *Mon Dieu*, *l’Accordéoniste*. She inspired songwriters and mentored many young artists. She received international success over her lifetime, despite a difficult and tragic end to her career due to serious health problems.

ABOUT THE SHOW

With a million tickets sold in more than 50 countries and acclaimed reviews worldwide, *Piaf! The Show* is a musical celebration of the life and music of the legendary French chanteuse Édith Piaf. After two years of absence on stages around the world, *Piaf! The Show* is about to set off on a world tour in 2023 to celebrate the 60th anniversary of Édith Piaf’s death.

Conceived and directed by the Nice-based theatrical maverick Gil Marsalla and starring Nathalie Lermitte who considered by all those close to Édith Piaf as the great French-speaking performer of the repertoire. *Piaf! The Show* premiered in 2015 as a tribute to “The Swallow of Montmartre” on the centenary of her birthday, and was inspired by the award-winning movie *La Vie en Rose*.

The show narrates the rags-to-riches story of the Parisian singer’s career through her unforgettable songs, complemented by a visual tapestry of previously unreleased photographs and images of famous Parisian locations of the Édith Piaf era.



Free GLOBAL FLICKS

Wednesdays at 1:30 & 7:30p



No | Chile
Feb. 2 **RESCHEDULED TO MARCH 16**



The Perfect Candidate | Saudi Arabia
Feb. 9



The Great Green Wall | Africa
Feb. 16



Eeb Allay Ooo! | India
Feb. 23



I'm No Longer Here | Mexico/NYC
Mar. 2



Made in France | France
Mar. 9

Enjoy these acclaimed international films followed with guided talkbacks by COD faculty. Films shown in original language with English subtitles.

Global Flicks is co-sponsored by Field and Experimental Learning/Study Abroad and McAninch Arts Center.

PROGRAM

Act 1

<i>Comme un Moineau</i>	Marc Hély/Jean Lenoir
<i>La Java de Cezigue</i>	René Paul Grotte/Jean Eblinger
<i>Les Mêmes de la Cloche</i>	André Decaye/Vincent Scotto
<i>L'Accordéoniste</i>	Michel Emer
<i>Entre St Ouen et Clignancourt</i>	Eugene Sablon/Maurice Thireau
<i>Elle Fréquentait la Rue Pigalle</i>	Raymond Asso/L. Maitrier
<i>La Goulante du Pauvre Jean</i>	René Rouzard/Marguerite Monnot
<i>Les Amants d'un Jour</i>	words: Claude Delécluse/Michelle Senlis music: Marguerite Monnot
<i>Je m'en Fous Pas Mal</i>	Michel Emer
<i>Paris</i>	André Bernheim
<i>C'est un Gars</i>	Pierre Roche/Charles Aznavour
<i>Mon légionnaire</i>	Raymond Asso/Marguerite Monnot
<i>Mon Vieux Lucien</i>	Michel Rivgache/Charles Dumont
<i>La Fête Continue</i>	Michel Emer
<i>Bravo Pour le Clown</i>	Henri Contet/Louiguy
<i>Les Flons Flons du Bal</i>	Charles Dumont/Michel Vaucaire

INTERMISSION

Act 2

<i>Mon Manège à Moi</i>	Jean Constantin/Norbert Glanzberg
<i>Jezebel</i>	Wayne Shanklin arr. Charles Aznavour/Raoul Breton
<i>Les Feuilles Mortes</i>	Jacques Prévert/Joseph Kosma
<i>Padam... Padam...</i>	Norbert Glanzberg/Henri Contet
<i>La Foule</i>	words: Enrique Dizeo French translation: Michel Rivgache music: Angel Cabral
<i>Les Mots d'Amour</i>	Michel Vaucaire/Charles Dumont
<i>Mon Dieu</i>	Michel Vaucaire/Charles Dumont
<i>Hymne à l'Amour</i>	Édith Piaf/Marguerite Monnot
<i>La Vie en Rose</i>	Édith Piaf/Louiguy
<i>Non, Je ne Regrette Rien</i>	Michel Vaucaire/Charles Dumont
<i>Milord</i>	Marguerite Monnot/Joseph Mustacchi

*The McAninch Arts Center season celebrates the memory of Joan Frank
for a lifetime of service, thanks to the support of family and friends.*



WHERE CULTURE
AND COMMUNITY
CONNECT

*Thank
You!*

The MAC, in partnership with the College of DuPage Foundation, thanks our generous 2021-2022 sponsors. Sponsor support helps us to keep ticket prices affordable and allows for engagement and enrichment for the entire community, making the MAC the Center where culture and community connect.



ILLINOIS
ARTS
COUNCIL
AGENCY



BROOKDALE
GLEN ELLYN
SENIOR LIVING SOLUTIONS

College of DuPage
FOUNDATION



DuPage
Foundation



National
Endowment
for the Arts
arts.gov



G. Carl Ball Family Foundation
Bjarne R. Ullsvik



An extra special thanks to the
Small Business Administration &
the Shuttered Venue Operators Grant

PROGRAM NOTES

Act 1

The first act offers a window into Édith Piaf's life before she became famous. Imagine that you are on the terrace of a small Parisian café, or on a cobbled square in Montmartre. This is where Piaf spent her earliest years, singing in the streets and depending on the kindness of strangers to toss her their loose change.

A young Piaf enters to the sound of a moody accordion. She sings of her childhood growing up poor, and how she longed to spread her wings and fly away *Like a Sparrow*. Despite her sad words, there's a smile on her face, because she is no longer that little girl.

Piaf continues to remember her youth, speaking of how she used to sing for the terraces *Between Saint-Ouen and Clignancourt*, amongst the gangs of street kids, and the scents of French fries and lilacs.

She speaks of her first lovers, and daydreams of those days of innocence. In *You Could Find Her on the Street Pigalle*, she relays the story of when cabaret owner Louis Lepree discovered her on the corner in the Pigalle area, in 1935, with her sad pale face. In *I Couldn't Care Less*, Piaf throws off the judgement of the upper class, reveling in the freedom of her Sundays walking on the banks of Seine, rejoicing in the glitter of the dance halls at night, and the tenderness of a lover touch. It is *Paris* she loves with the scent of the chestnut trees, the light in the morning, and the music of its streets. Her love of Paris shifts to love of men with *It's a Guy*, a man who loved and left her in tatters and *My Legionnaire*, an affair with an American army boy that wasn't meant to last. In full swing, *The Party Continues* with the crowds, music, and carousels. With *Bravo for the Clown!* Piaf revels in the world of the circus, of clowns, musical delights, hidden vices, laughter, and *The Sounds of the Dance Hall*.

Act 2

The second act recreates some of the legendary performances Piaf gave after she had become a renowned artist performing on the world's most renowned stages. Imagine sitting in the famous Olympia Theatre in Paris, or at Carnegie Hall in 1957, when she gave one of her last memorable concerts.

Édith Piaf's tumultuous relationship with love continues with the uplifting energy of *You're My Carousel*, the dark betrayal of *Jezebel*, the sad goodbye of *Autumn Leaves*. The memories of those lost love affairs haunt Piaf, beating like a wooden heart, *Padam...Padam*.

Not a woman to dwell in sadness, Piaf is caught up in the passion of *The Crowd*, engulfed, buoyed, and carried away by a love as powerful and crazed as a rollicking mob. In a different tone, her *Hymn to Love* bares her soul as she surrenders herself entirely to her passion, promising to give up everything - country, home, friends - as long as it would keep love at her side. In *My God*, she even begs the heavens to keep her love at her side, just for one more day. With the world in her thrall, Piaf embarks on the delicate and beautiful sentiment of her beloved *La Vie en Rose*. "Hold me close and hold me fast, the magic spell you cast, this is la vie en rose."

Arts DuPage

A DuPage Foundation Initiative



artsdupage.org



facebook/ArtsDuPage



@ArtsDuPage



#Art Happens Here



DuPage
Foundation **DF**[®]
Doing a world of good in our own backyard[®]

dupagefoundation.org | 630.665.5556



2021-22 DINING PARTNERS

WHERE
CULTURE AND
COMMUNITY
CONNECT



The MAC is thrilled to be partnering with neighborhood restaurants in our area. For your pre-show meals or post-show bites, these establishments provide MAC patrons with exclusive discounts and offers. Must present coupon and MAC ticket at restaurant prior to ordering. Valid only on day/night of MAC event.



535 W. Liberty Dr, Wheaton, IL 60187
(630) 784-8015



2770 S Highland Ave, Lombard, IL 60148
(630) 889-9200



AT THE VILLAGE LINKS

485 Winchell Way, Glen Ellyn, IL 60137
(630) 469-5550

a toda madre

499 N Main St, Glen Ellyn, IL 60137
(630) 474-0969

GLEN PRAIRIE
LOCAL FLAVOR
FINE FOOD & DRINK

1250 Roosevelt Rd, Glen Ellyn, IL 60137
(630) 613-1250

Santa Fe
Mexican Restaurant

426 N Main St, Glen Ellyn, IL 60137
(630) 790-3311



NATHALIE LERMITTE (Singer). Singing is certainly a true vocation for Lermitte. Indeed, at the age of six, she started performing.

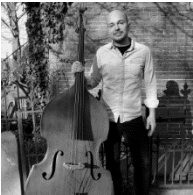
The day she turned 18 was also the day she released her first album *Tu es tout ce que j'aime*, two singles of which sold over 400,000 copies. In 1995, she opened for Michel Leeb at the Olympia with Herbert Léonard.

At the same time, Lermitte also recorded numerous theme songs for television series and cartoons. 1989 marked her first steps in musical comedy: she was hired to play the role of Cristal in *Starmania*, which she performed for three years at the Théâtre Marigny in Paris and then on a national tour, ending in Moscow and Saint Petersburg. This was followed by a succession of roles in musicals in which she often played the role of Édith Piaf.

At the same time, she was a music columnist in the programme *Chabada* every Sunday at 5pm on France 3 from 2009 to 2012.

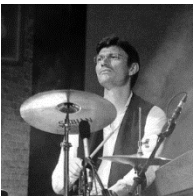
Since February 2015, she has been playing the role of the Queen in the play *La petite fille aux allumettes*, nominated for a Molière Award and directed by David Rozen.

In 2017, she joined *Piaf! The Show* and has enjoyed worldwide success.



GILIARD LOPES (Double Bass) Born in 1983 in Porto Alegre, Brazil, Lopes was introduced to music early on through the sounds of Brazilian folklore. Since 2001 in Europe, Lopes studied jazz double bass at the famous Guildhall School of Music in London, then at the Jazz Institute in Berlin, where he obtained a Master's degree in arrangement and composition. Lopes has performed on international stages and festivals such as: London

Jazz Festival, Jazz at the Lincoln Center, Royal Albert Hall, Seoul International Jazz Festival and has shared stages with artists such as Marcos Valle, Gregory Generet, Chico Chagas, Judy Jackson, John Crawford Quintet, among others.



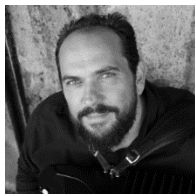
BENOÎT PIERRON (Percussion, Xylophone) is originally from Nice. He started with the piano at the age of seven, then became interested in drums at the age of 13. In 1994, he joined the classical percussion class with Jacques Carré at the Conservatory of Nice, where he obtained a first prize in 1998. In 1999, he studied the jazz drums with JP Cekarrelli, the zarb with Z. Miramdolbagi and the tablas for five years with Nihar Mehta

and Puran Maharaj.

Since the age of 18, he joined as an additional musician at the Nice Philharmonic Orchestra, the PACA Regional Orchestra, the Orchester de Marseille and the Monte-Carlo Philharmonic Orchestra. In 2000, he joined the World Youth Orchestra, led by Y. Kreizberg and toured for peace in Eastern Europe.

PROFILES

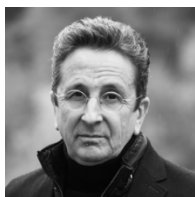
From September 2005 to July 2006, he was engaged as soloist of the Monte-Carlo Philharmonic Orchestra. From 2001 to 2004, he taught at the school of music of the Broc and from 2002 to 2005, at the conservatory of Roquebrune Cap Martin. Since 2012, he has played solo keyboards in addition to the Monte Carlo Philharmonic Orchestra. Since October 2016, he has been part of *Piaf! the Show* as a drummer/percussionist. He has also participated in recordings with a wide variety of styles: The Children of Invention (2000), Archive (2009), Vladimir Bozar 'N' Ze Sheraf Orkestär (2009), FormatA4 (2010), PyKaBoom.



FRÉDÉRIC VIALE (Accordion) is 44 years old. At the age of eight, he was introduced to the world of music by Mr. Lucien Galliano (father of Richard Galliano). He studied the repertoires of Murena, Viseur, Colombo and Baselli and participated in national and international competitions. As a teenager, he discovered jazz thanks to Django Reinhardt, Stéphane Grappelli, Charlie Parker and Miles Davis. It was at this time that he also

fell in love with the bandoneon, which he played in various groups. Viale's taste for harmony, rhythm, improvisation and composition naturally led him to record his first album *Paradise* with his fellow musicians.

Composer and arranger, Viale plays his accordion to the rhythms of jazz, tango or Brazilian music on national and international stages. Viale plays his own compositions, alone or with his trio. In 2015, Pignini, the internationally renowned Italian manufacturer, offered Viale a custom-made instrument: the "new Cassotto FV". Generous and subtle sound, a fabulous gift for a jazzman.



PHILIPPE VILLA (Musical Director, Piano). Born January 28, 1963 in Nice, Villa started in 1971 learning music by studying piano and music theory at the Nice Conservatory. Hardworking and passionate, he was awarded first prize in Piano Jazz in 1989. He accompanied renowned artists such as Shirley Bassey, Gloria Gaynor, and played at the Casino de Paris and the Olympia for five years alongside Gilbert Montagne, for whom he wrote the

arrangements for his live album. Passionate about jazz, improvisation and composition, he performed with the Philippe Villa Trio in many concerts and festivals.



GIL MARSALLA (Producer, Director) has been studying music since the age of 14 and had a rewarding career as a musician, music director, conductor and artistic director. He has been successfully producing musical and theatrical shows and large-scale events for the past 20 years, most recently with his own production company, Directo Productions, which he founded in 2001 with the goal of supporting and presenting emerging

French artists. Since 2007, he has been touring his productions worldwide and successfully presented his shows to sold-out houses in North & South America, Europe, Japan, China, and many other international locations on four continents.

A worldwide French music post war success

There has been a distinctive French "cabaret" style since end of the 19th and the beginning of the 20th century, exemplified by such famous places as the Moulin Rouge, the Lido, etc. It's an aspect of French culture which is world famous, but until recently, if you wanted to experience it fully, you had to come to Paris!

In 2009, while travelling a lot, Marsalla sensed a real hunger from audiences all over the world to hear the classic French songs of the 20th Century, songs made famous by great artists like Édith Piaf, Charles Aznavour, Jacques Brel, Gilbert Bécaud, Yves Montand... So, he decided to produce French cabaret shows and tour them internationally.

After several years of touring and producing more than 1000 concerts worldwide, Marsalla is considered as the leading producer of this kind of work; he has opened up a huge market for this beloved material.

It is an ever-expanding vogue, one which grew each year as he created first *Paris! The Show* (2014) then *Piaf! The Show* (2015), *Formidable Aznavour* (2017), *Piaf Symphonic* (2018), *Douce France* (2019), *Brel! The Show* (2020), *Roxane, The Musical* (2021), *What Now My Love* (2022). All these shows will tour worldwide.

Marsalla is very proud to continue and preserve his native country's musical heritage, and to have spearheaded the renewal of French cabaret by bringing it to audiences all over the globe.



MAKE MUSIC WHERE MUSIC THRIVES

College of DuPage brings 50 years of training and supporting musicians like you in whatever it is you want to do. With a staff of 25 private music instructors, nine ensembles, and four degree and certificate programs, COD is the first choice of serious musicians from the western suburbs and beyond.

For more information

Contact Deb Zelman at (630) 942-2391 or zelmand@cod.edu.

For ADA accommodations, please email access@cod.edu with the event title in the subject line and your accommodation request. Please email two weeks in advance.

 **College of DuPage**



Cleve Carney Museum of Art

Ayanah Moor

February 10 - April 10



Faculty Show
March 3 - May 1

Student Exhibition
April 18 - May 1

TheCCMA.org

Become a CCMA Member Today!



The MAC offers all of this for you,
but we can't do it without you!



YOUR GIFT HELPS US TO REMAIN A SOURCE OF INSPIRATION AND JOY!



GIVE TODAY!

To support, visit us at foundation.cod.edu or call (630) 942-2462



**College of DuPage
FOUNDATION**

(630) 942-2462 | foundation@codfound.org | foundation.cod.edu

Friends of the MAC

The Friends of the MAC is a family of those who have decided that a world-class performing and visual arts center should reside in their community. Ticket sales provide only 42 percent of our \$4 million operating budget. It is through the support of College of DuPage and through the generous gifts from patrons and local businesses that we can keep art in our museum and on our stages.

Your Gift to the MAC

- Brings nationally and internationally renowned artists to our community
- Supports our SchoolStage program that annually offers affordable arts experiences to thousands of schoolchildren
- Provides students and community members the opportunity to interact with artists
- Enhances quality of life in our community

Without the generous support of the Friends of the MAC, we would not be the beacon for the arts in DuPage County. We gratefully thank our friends, and we invite others to join them.

Arts Center and MAC-tastic Treat Seats Endowments

Donor may choose to direct gifts to the Arts Center Endowment or the MAC-tastic Treat Seats – Tickets for Kids & Families Endowment. Donations made to these MAC Endowments, our “savings accounts,” go into principal secured, invested accounts that will provide ongoing support for arts programs and arts accessibility for years to come.

The McAninch Arts Center and the College of DuPage Foundation can also provide you with information on planned giving options, gifts of stock, IRA Charitable Rollovers and other giving opportunities.

For complete details, visit the MAC Box Office or contact the College of DuPage Foundation at (630) 942-2462 or foundation@codfound.org.

College of DuPage
FOUNDATION 

FRIENDS OF THE MAC

McAninch Arts Center acknowledges and gives grateful thanks to those donors who have contributed in support of the MAC mission and vision. This list of donors reflects contributions made from July 1, 2020 - Jan. 28, 2022. While we carefully prepared this list, we recognize that errors may have occurred. Please accept our apology if you are not properly represented on this list and contact the College of DuPage Foundation at (630) 942-2462 so we may correct our records.

Leadership Circle (\$5,000 and up)

Anonymous (4)
American International Group
Lowell and Barbara Anderson
The John A. Attard Family
Foundation
Anna Ball
Bank of America
Dr. and Mrs. Brian W. Caputo
Mrs. Clark G. Carpenter
Anita Dickson
DuPage Foundation
Mr. David J. Frank
G. Carl Ball Family
Foundation
Goya Foods, Inc
JCS Fund of DuPage
Foundation
La Tequileria, Inc.
Mr. and Mrs. Richard Lamb
and Susan and Richard
Lamb Charitable Fund of
The DuPage Foundation
Mr. Larry C. Larson*
Ms. Diana L. Martinez
Dr. and Mrs. Harold D.
McAninch
Margaret and Michael McCoy
Ms. Kimberly G. Morris
Mr. Doug Peterson
Mr. and Mrs. Mark A.
Peterson
Meri Phillips
John Rutledge and Betty
Joseph
Charles Schlau
Mr. and Mrs. Steven E.
Shebik
State of Illinois
STG Divorce Law
Terrence J. Taylor and
Maureen Sullivan Taylor
Bjarne R. Ullsvik
VALIC
Dr. Donald G. Westlake
Wight & Company
Mark Wight and Eszter
Borvendeg
Ms. Kathleen Yosko

Encore Circle (\$2,500-\$4,999)

Anonymous (2)
Joseph and Betsy Ballek

Dr. and Mrs. Christopher B.
Burke
Rick and Patty Carney
John and Pamela Dalby
Enertherm Corporation/Russ
and Judy Flores
Gilbert Family Charitable Fund
- Schwab Charitable Fund
Mr. and Mrs. James H.
Knippen, II
Karen and Gene Kuhn
Marilyn H. Wolff Foundation
David and Carolyn May
Jane E. Moore
Joan Morrissey
Drs. Donald E. and Mary
Ellen Newsom
Joan and Bob Olach
Dorothy I. O'Reilly
Mr. and Mrs. Anthony G.
Padgett
Ms. Mary N. Pieters
Mr. and Mrs. William
Podgorski
Kelly and Roland Raffel, in
memory of Herbert K.
Raffel
Rotary Club of Glen Ellyn
Mr. and Mrs. Frank
Shoemaker
Geraldine Smrcina
Marilyn Smrcina
Angel and Troy Traub
Mr. and Mrs. Michael R.
Webb
Wheaton Noon Rotary
Bonnie M. Wheaton

Director's Circle (\$1,000-\$2,999)

Anonymous (5)
Tony Achilles
Robert and Lynne Anderson
and the Robert and Lynne
Anderson Charitable Fund
of US Charitable Gift Trust
Katherine Balek
Harold and Karen Bauer
Mr. and Mrs. Milton Bentley
Mr. and Mrs. James Blaha
Prof. and Mrs. Charles E.
Boone
Chicago Westmont Tesla
Community Foundation of
Will County

James and Marie Drasal and
The Drasal Family Fund of
Fidelity Charitable Gift Fund
E. Jay Van Cura MD Charitable
Fund of Vanguard Charitable
Anonymous Design, Inc.
Marcela Fanning
Debbie Fulks
Jeanette N. and Renee Giragos,
in memory of Dr. Henry G.
Giragos
Ginni and Chris
Mr. and Mrs. Robert G. Hartman
Mr. Mark J. Hill
Humernansky Family
Foundation
Jorge and Beatriz Iorgulescu
Mr. and Mrs. James E. Jenkins
Jeffrey Jens and Ann Boisclair
The Johansen Family Fund of
the DuPage Community
Foundation
Mr. and Mrs. Walter J. Johnson
Kenneth & Nancy Serwinski
Charitable Fund -Schwab
Charitable
Mr. and Mrs. James Klang
Charlene Kornoski-Du Vall
Mr. William Kronenberg
Ms. Mary Locher
Marilyn and Tipton McCawley,
Jr.
John and Lynette McCortney
Mr. and Mrs. Todd Menenberg
Bill and Nancy Moore
Mr. and Mrs. Ray Mulacek
Kirk Muspratt, in memory of
Henry and Jeanette Giragos
Nicor Gas
Judith May O'Dell
Jane Oldfield
Karen Webb Owen
Madeleine Pachay
Ms. Linda A. Picchiotino
Jeffrey and Debora Ponko
Mr. and Mrs. Paul P. Pycirk, Jr.
Richard and Elizabeth
Quaintance
Gary and Mary Rash
The Rev. Dr. Curtis and Leanne
Rolfe
Judy Ronaldson
Jordan Ross
Rotary International District
6440

FRIENDS OF THE MAC

Rotary International District
6450, Inc
Ms. Theresa M. Sak
Ms. Lisa Savegnago and Mr.
Ronald A. Johnson
Mr. John Schofield
Mr. and Mrs. Kenneth
Serwinski and the Kenneth
and Nancy Serwinski
Charitable Fund - Schwab
Charitable
Kristin and Peter Shulman
Skeet and Laura Skeet
Mr. and Mrs. D. G.
Stephenson, Jr.
TJ Moore Giving Fund -
Fidelity Charitable
Todd and Mimi Menenberg
Charitable Fund - Schwab
Charitable
Mr. and Mrs. Avram Tucker
Theodore M. Utchen
Dr. and Mrs. E. Jay Van Cura
and The E Jay Van Cura
MD Charitable Fund of the
Vanguard Charitable
Endowment Program
James and Patricia Vary
Scott and Kristen Wiersum
Rich and Kathy Wilders
The Marilyn H. Wolff
Foundation
Jo Anne Zipperer

Ambassador Circle (\$500-\$999)

Anonymous (4)
Ms. Bonniejean Alford
Col. and Mrs. Renato P.
Bacci, Jr.
Ms. Susannah Ball
Jack and Mary Ellen Barry
Gayle and Don Bartell
Ms. Eunice Becker
Mr. Geoffrey Bevington
Mr. and Mrs. Collin M. Biggs
Ronald and Hope Bucher
William Bulger
Capt. Bernardo Iorgulescu
USMC Memorial Fund
DuPage Foundation
Peach and Wayne Carr
Mr. Robert B. Chasteen
Chocolaterie Stam of Glen
Ellyn
Megan and Peter Clifford
Delta Airlines
Dempsey-Musker
Janet Derber
Robert and Carol Drake, Jr.
William and Kathleen
Drennan

Joanne East
Mr. and Mrs. Timothy D.
Elliott
Joseph and Frances Eraci
Finances by Design Inc.
Mr. Anthony Fitzpatrick
Mr. and Mrs. Jose G. Flores
Ms. Karen Gustafson
Gwen and Chet Henry
Mr. and Mrs. John A.
Herndon
Mr. Glenn Hopkins
Ms. Judith Hunnicutt
Dr. Beth Johnson
Jon and Ruth Good
Foundation - Fidelity
Charitable Fund
Dee Kaempfen
Christine Kickels
Ms. Julie Knudson and Mr.
Paul Nielson
Richard and Sheila Komarek
Ida Lee
Ms. Kathy Leimbach
Mr. and Mrs. Gary Lietz
Barb and Scott Marquardt
Mr. Henry A. Matthews
Ellen and Daniel McGowan
Mr. Glenn McMurray
Dr. and Mrs. John Messitt
LTC and Mrs. James
Milobowski
John Mulherin
Ms. Laurel Niska
Mr. and Mrs. Philip Norton
Helen Pachay
Parkers' Restaurant and Bar
Jim and Lorraine Paulissen
PGA Tour Superstore
Pica-do-yo, LLC
Ginny and Don Raths
Mr. William C. Raymond
Ms. Amy Ripepi
Al and Cecile Robinson
Ms. Celia E. Rodee
Sylvia Rodee
Rotary Club of Carol Stream
(Club 3112)
Ms. Lisa Sallwasser
Mr. and Mrs. Paul Seidlitz
The Shimp Family
Ms. Donna Jean Simon
Mr. and Mrs. Louis A.
Steenwyk
Wheaton Rotary A.M. Club

Performer (\$250-\$499)

Anonymous (10)
Young Ahn
Terri Allen
Mr. and Mrs. Brandon
Anderson

Mr. and Mrs. Tom Anderson
Andrew and Maria Smith
Charitable Fund - Fidelity
Charitable
Mrs. Lynnette Arendt
Barbara and Paul Aronson
Vickie Austin
Mr. and Mrs. Ronald N. Ben
Mr. and Ms. John Borge
Jim and Sandy Boves
Lesley Brown
Ed and Kay Burton
Cabernet & Company
Gayatri Choudhary
Ms. Linda Clark
Ms. Jenny Croitoru
Bill Curry and Gretchen
Fleming
Sharon D'Alessandro
Ms. Sara De Zara
Joy and Ron Detmer
Barbara DiGuido
Senator and Mrs. Kirk Dillard
Ms. Mary A. Donlon
Evalée Dumas
Carol and David Eisinger
Mr. Ryan M. Ellison
Ms. Brenda Eriksen
Christine and Craig Fenne
David and Janet Fox
Kenneth D. Frank
Marcia and Lorne Frank
Mr. and Mrs. Tim Franzen
David Fraser
Ms. Marilyn Fredrickson
Ms. Rebecca Garcia
Ms. Margaret R. Glenzinski
Ms. Joann Gras
Ms. Adrienne Gregory
Mr. Bruce Guzman
Catherine and Art Hall
Greg and Alexandra Hart
Brad and Victoria Hauserman
Jean M. Hawkinson
Lance Herning
Mr. and Mrs. John D. Hlotke
Judy A. Hoskins
Representative Terra Costa
Howard and Nick Howard
Mr. and Mrs. Frank C. Hudetz
Mr. Bob Jackula
Janet and John Judd
Mr. and Mrs. Paul W.
Junkroski
Ms. Barbara Kamm
Karl and Lee Ann Karnatz
Virginia and Charles
Klingsporn
John P. and Catherine M.
Kos
Ms. Bernadette Laszewski
and Mr. John Fossen

FRIENDS OF THE MAC

- Mrs. and Mr. Cindy Lattimer
 Massimo Letizia
 Ms. Alixe Lischett
 Mrs. Hsiu Susan Logan
 Mr. and Mrs. Ross Manire
 Marinella's Ristorante Italiano
 Janet Marks
 Mr. and Mrs. Daniel E. Marsh
 Mr. and Mrs. Rick Massa
 Mr. and Mrs. William E. Matte, Jr.
 Mr. Donald E. McGowan and Ms. Mary L. Prazak
 Florine McKay
 Mr. and Mrs. John Meier
 Sharon A. Meltzer
 Ms. Beatriz Mendoza
 Nina and Mark Menis
 Mr. and Mrs. Kenneth Metcalfe
 Monarch Landing
 Mr. and Mrs. Darren Morrison
 Mr. and Mrs. David W. Morton
 Ms. and Mr. Jane Mrofka
 Mr. and Mrs. John Nassos
 Ms. Kerry O'Brien and Mr. Doug King
 Mr. Dan O'Connor
 Ms. and Mr. Adriana Ohl Zamora
 Olive 'N Vinnie's Oil and Balsamic Bar
 Ms. Debra Ombrello
 Ms. Vivian Palicki
 Mr. Jim Peterson
 Mr. and Mrs. Kenneth Peterson
 Mr. and Mrs. Mark Pfefferman
 Press Photography Network
 Tom and Karen Pulver
 Brian and Ambika Reid
 Ms. Diane G. Rath
 Ms. Patricia Read
 Barb and Kell Reimann
 Richard J. and Linda J. Sieracki Foundation
 Ms. Rene' M. Richards
 Mr. and Mrs. Kirk T. Roberts
 Ms. Yolanda E. Rocio
 Adrienne Roggenbuck
 Mr. Paul Rom
 Rotary Club of Bloomingdale-Roselle
 Janey Sarther
 Jerry and Susan Schurmeier
 Dr. Thomas R. Scott
 Mr. Gerald Sendra
 Mr. and Ms. Andrew Smith and the Andrew and Maria Smith Charitable Fund - Fidelity Charitable
- Mr. Vince Sparrow
 Chris Steinys
 Lisa and Ted Stevens
 Suzan and Glenn Stith
 Ms. Janet Stiven
 Cherry Stoddard
 Su Ki's Salon
 Grace and Len Swanson
 Ms. Patti Taves
 Anthony and Mona Taylor
 Ms. Marie L. Tenzinger
 The Sentius Charitable Fund
 Mr. and Mrs. John W. Vires
 Mr. Jeremy Vrtis
 Ms. Deborah Walsh
 Mr. and Mrs. Anthony J. Wdowiarz
 Ms. Nancy Webster
 Ms. Kathy Wessel
 Ginger and Paul Wheeler
 Ms. Olivia Schreiner and Mr. Justin Witte
 Jerry and Lin Zielinski
 Mr. and Mrs. Thomas Zimmermann
- Friend (\$50-\$249)**
 Anonymous (18)
 A Toda Madre
 Sue Adams
 Peggy Aldworth
 Ms. Sandra Alexander
 Nancy Allured
 American Association of University Women - Lombard
 American Association of University Women
 Tina Connelly and Dennis Anderson
 Andrew's Garden
 Ms. Nancy Arango
 Mr. and Mrs. Kent C. Aufdengarten
 Ms. Christine A. Aument
 Avanzare Restaurant
 Cynthia Baranowski
 Darlene Barger
 A. C. Barnicle
 Bob and Joy Barrell
 Debbie Barrett and Barry Zelinski
 Ms. Pam Bartle
 Ms. Betty Basista Ronaldson
 Betty and Bob Becker
 Ms. Beverly J. Bednarik
 Biff Behr and Lynne Richman
 Ms. Patricia Bell-Daniels
 Marty and Betty Bender
 Mr. and Mrs. Bradley Bensenberg
 Mr. and Mrs. Chris Binnig
- Mrs. Germaine Bird
 Ms. Dianne Birdsall
 Mr. and Mrs. Paul Bolbat
 Mr. and Mrs. James Borus
 Mr. Franklin E. Bowes
 Mrs. Linda Bradley
 Susan Brassfield
 Mr. Gerard Brosnan
 Mr. George Bruce
 Nickey Brummel
 Dr. and Mrs. John E. Buntrock
 Mr. and Mrs. Charles C. Burgis
 Mildred and Harold Burrow
 Mr. and Mrs. Robert Burrows
 C.B. Conlin Landscapes, Inc
 Mr. John Cadle
 Mr. and Mrs. Will Calderwood
 Cantigny Golf Club
 Ms. Virginia Cantu
 Mr. and Mrs. Kenneth Carlson
 Ms. Katherine Carmichael
 Jim Carsten
 Mrs. Janet Casey
 Mr. Joseph Cassidy
 Greg and Janet Chefجع
 Ms. Lourdes S. Chew
 Ms. Nancy Chlumsky
 Mr. and Mrs. Alan L. Clark
 Ms. Michele Clemen
 Ms. Gretchen Colavito
 Mr. and Mrs. Jim Connolly
 Peggy Connolly
 Mr. and Mrs. Paul L. Conti
 Ms. Patricia Conway
 Ms. Erica Coppolino
 CycleBar Wheaton
 Lee Dabkey
 Jeanne E. Davik
 DC Body Bar
 George W. and Ann Dervis
 Marilyn and Gene Dicola
 Ms. Kathryn Dillon
 Mark and Kim Dorn
 DoubleTree by Hilton Lisle Naperville
 Ms. Margaret Doyle
 Alan and Carolyn Drake
 Bruce and Kathy Dudzik
 Edwin A. and Gerry Dulik
 Jenny Dunbar
 Ms. Laura Durudogon
 Ms. Anita Dykema
 Daniel Edelman and Fran Kravitz
 Mr. and Mrs. Michael Edwards
 Mr. and Mrs. Thomas B. Egan
 Eileen B. Landau Charitable Fund of Fidelity Charitable

FRIENDS OF THE MAC

Penelope Ellsworth
 William Epcke
 Miles Evans
 George and Kathryn
 Fairbairn
 William and Sally Newton
 Fairbank
 Mr. Gregory Finch
 Ms. Ann Fink
 Mr. and Mrs. Todd Fischer
 Ms. Janice L. Fogle
 Ms. Judith D. Frazier
 Ruta Freimanis
 Jay French
 Fusion Hair Salon
 Ms. Anne Gabriel
 Ms. Jo Anne Ganziano
 Mary Jane Garrett
 James and Nancy
 Gianfrancisco
 Bob and Carrie Gibson
 Mr. and Mrs. Jeffrey Gibson
 Ms. Wanda Gusts
 Mr. and Mrs. Daniel Glab
 Glen Ellyn Historical Society
 Mr. and Mrs. John Gordon
 Ms. Anne Gould
 Jack and Robin Graham and
 the Graham Giving Fund
 of Fidelity Charitable
 Lenn Grayes
 Ms. Aldona Green
 Ms. Nancy Ann Green
 Ms. Cathy Griffin
 Ms. Wanda Gustas
 Ms. Laura Guzman
 Ida Elizabeth Hagman
 Mr. and Mrs. David Hall
 Diana and Gary Harper
 Mr. and Mrs. Thomas R.
 Hattan
 Ms. Jennifer Hayward
 Mr. and Mrs. Edward M.
 Hegarty
 Paula and James Hellige
 Ms. Ann B. Henderson
 Mr. and Mrs. Rich Henderson
 Mr. Lloyd Hendrickson
 Mr. Geoffrey Henry
 Ms. Susan Hervey
 Sandra Hill
 Ron Hilton
 Allan G. Hins and Marilyn E.
 Wilgocki
 Ms. Dianne V. Hlinsky
 Ms. Heidi J. Holan
 Ms. Rosa Lidia Huante
 Ms. Donna Ialongo
 Stephanie Iglehart
 Illinois Tool Works
 Fatenah Issa

Dr. and Mrs. Richard H.
 Jarman
 Ms. Marilyn L. Jelinek
 Tony and Julie Johnson
 Mr. Brian K. Johnson
 Mr. Timothy Johnson
 Jolie Charcuterie
 Ms. Felicia S. Kaplan
 Tom and Kay Kelly
 Mr. Dylan Kim
 Mr. Randolph King
 Mr. Joshua Klinzing
 Ulrike Konchan
 Ms. Anne Kopke
 Michael F. Kozlowski
 Ms. Claire Krzyzewski
 Mr. and Mrs. Thomas J. Kuhn
 Linda Kulikowski
 Mr. John Kunkes
 L.L. Bean
 Mr. Tom LaBarre
 Mr. John L. Ladle, Jr.
 Eileen B. Landau, Fidelity
 Charitable Trust, in
 Memory of Eliot A. Landau
 and Cateria A. Pryde
 Ms. Nancy Lanning
 Gregory and Kristine Larsen
 Ms. Cheryl LeeVan
 Ms. Catherine I. Lencioni
 Mr. and Mrs. Ralph Linde
 Ms. Andrea Lindgren
 Ms. Harriett Lindstrom
 Ms. Donna J. Luce
 Mark and Kathleen Lundberg
 Ms. Anne Lysaught
 Maestro Artist Management
 Mr. and Mrs. Edward
 Makauskas
 Leal Maloney
 Madeleine and Ralph
 Marbach
 Ms. Brandee Martin-Horton
 Ms. Christine Maxwell
 Jeffrey May
 Ms. Elaine McCluskey
 Mrs. Dorothy McCormack
 Ms. Kathleen McCullough
 Mr. and Mrs. David M.
 McGowan
 Mr. and Mrs. James McGuire
 Mary and Ray McMahan
 Meson Sabika
 Michael and Sandra Meyers
 Mr. and Mrs. Wayne J. Micek
 Mr. and Mrs. Francis Mies
 Ms. Ann Mikulay
 Mr. and Mrs. Craig Miller
 Ms. Kendra Miller
 Gail Minkus
 Bud and Pat Motz

Mr. and Mrs. Don Motz
 Ms. Lois Mouhelis
 Ms. Phyllis A. Mueller
 Ms. Barbara Murphy
 Barbara and Ted Nagengast
 Ernest and JoAnne Nassos
 National Museum of
 Mexican Art
 Michael and Judith Nigro
 James and Joan Nocera
 Mr. John L. Norton
 Dr. James F. Nowakowski
 Ms. Tonya Ohern
 Gwen O'Loughlin
 Ms. Judith W. Olson
 Ms. Natalie Owen
 Alice E. Packard
 Greg and Sue Pawlowicz
 Ms. Kimberly Peckenpaugh
 Ms. Ruth Peterman
 Ms. Erin Peterson
 Rohan and Merlyn Phillips
 Mr. and Mrs. Edward Pillar
 Pinecones & Stitches
 Lisa Pint
 Roger and Sarah Poeppel
 Ms. Cassandra J. Ponstein
 Ms. Lynda Pratscher
 Roger and Vivian Pscherer
 John and Mandy Rakow
 Ms. Mari Kaye Rath
 Ms. Tracey J. Reid
 Reserve 22 Restaurant at
 Village Links
 Mr. Leslie Robbins
 Marlene and Bob Rosecrans
 Ms. Patricia M. Rotondi
 Mr. and Mrs. Gus A.
 Rousonelos
 Nancy L. Ruby
 Mr. and Mrs. Larry Rynning
 Sandra Sansone Brennan
 Alfred Savino
 Ms. Carleen L. Schreder
 Mr. Carl Schref
 Richard and Patricia
 Schwarze
 Ms. Sherie Shapiro
 Awad and Rhoda Sifri
 Mike Sitrick
 Ms. Peggy Slepian
 Mr. and Mrs. Stephen Smith
 Ms. Rosemary Snow
 Ms. Faria Sepahrokh
 Ms. Barbara Soris
 Ms. Patricia B. Spence
 Mr. and Mrs. Hugh Spencer
 Ms. Catherine Sreckovich
 Ms. Eliza Stern
 Dr. and Mrs. Conrad Stoll
 Mr. and Mrs. John Stotts

FRIENDS OF THE MAC

Norma C. Stroner
 Mr. and Mrs. Thomas J. Suhrbur
 Dr. Nancy Svoboda
 Katherine Swihart
 Tom and Jan Szot
 Ms. Helen B. Szymanski
 Ms. Kathleen Talenco
 Ms. Macarena Tamayo-Calabrese
 Ms. Donna Templeton
 Mr. John Teschky
 Virginia and Jerry Thompson
 Paul Thompson
 Treasure House Resale Shop
 Trinity Irish Dancers
 James Truesdale
 Ms. Robin S. Tryloff
 Mr. Thomas Turigliatto
 Ms. Nancy H. Turner
 Ms. Carol Upshaw
 Patricia and Anthony Vahcic
 Kathryn Voland-Mann
 Mr. and Mrs. Michael Volk
 Ms. Helen Vopenka
 Ms. Patricia Vopenka
 Judith Wagner
 Penelope Wainwright
 Larry Ward
 Mr. Edward Warmowski
 Judy Webster
 Ms. Mary Lou Wehrl
 Patricia and Richard Weichle
 Robert and Marlene Weiler
 Anne and Jim Wengert
 John and Bobbi Wheatley
 Wheaton Chamber of Commerce
 Whiskey Acres
 Robert and Jeanne Whisler
 Ms. Mary Wiesen
 Lenore Wilcox

Mr. Tod D. Willman
 Ms. Paula Willuweit Pycrcik
 Joseph and Laura Wilmarth
 Tyna
 Ms. Jolene Wise
 Ms. Ying L. Wong
 Mr. John Wright
 Mr. and Mrs. Robert Wulffen
 Ms. Janice Yohanan
 Diane Meiborg and Roger Zacek
 Ms. Sabrina N. Zeidler

Corporate and Community Sponsors

21c. Museum Hotel
 A Toda Madre
 Adelle's Fine American Fare
 Aero Mexico/Delta
 American International Group
 Arts Midwest
 Bank of America
 Ball Horticultural Company
 Bat 17 Lombard
 Brookdale Glen Ellyn
 Cabernet & Company
 Christopher B. Burke Engineering
 College of DuPage
 Foundation
 Crowne Plaza Hotel
 DoubleTree by Hilton Lisle
 Naperville
 DuPage Convention and Visitors Bureau
 DuPage Foundation
 Ecolab
 El Famous Burrito
 Enjoy Illinois/Department of Commerce and Economic Opportunity
 Extract Juicery

G. Carl Ball Family Foundation
 Glen Prairie
 Goya Foods
 Illinois Arts Council Agency
 JCS Fund of the DuPage Foundation
 La Tequileria, Inc.
 Legat Architects
 Naperville Convention and Visitors Bureau
 National Endowment for the Arts
 Nicor Gas
 Nothing Bundt Cakes
 Parkers' Restaurant and Bar Reserve 22
 Rotary Club of Bloomingdale-Roselle
 Rotary Club of Carol Stream
 Rotary Club of Glen Ellyn
 Rotary International District 6440
 Rotary International District 6450
 Santa Fe Restaurant
 Small Business Administration-Shuttered Venue Operators Grant
 STG Divorce Law.
 TM Financial Forensics, LLC
 Valic
 90.9FM WDCB
 West Suburban Art Society
 98.7 WFMT
 Wheaton A.M. Rotary Club
 Wight and Company

* includes Seaton Society



HOUSE NOTES

- **Mailing List:** If this is your first visit to the McAninch Arts Center, please stop by our Box Office to add your name to our mailing list or register your email at www.AtTheMAC.org.
- Cameras and recording devices are not allowed in the theater and are prohibited by our contracts with the artists.
- Smoking is not permitted in the theater or on campus.
- For your comfort and security, all backpacks and large bags must be checked.
- Electronic pagers and patrons' seat locations should be given to the House Manager, who will notify you in the event of a call. Patrons wearing wristwatch alarms or carrying cellular phones are respectfully requested to turn them off while in the theater.
- Emergency phone number at College of DuPage Police Department for after-hour calls is (630) 942-2000.
- Latecomers seated at discretion of the House Manager.
- Groups of 10 or more may contact Kat Kazmierski at (630) 942-3026 or kazmierskik@cod.edu to arrange for group discounts.
- If you notice a spill in the theater, please notify an usher.
- McAninch Arts Center volunteers are people who assist the house staff in areas of ticket taking, ushering and general management during performances. To get involved, call (630) 942-3705.
- **For Americans With Disabilities Act** accommodations, call (630) 942-2141 (voice) or (630) 858-9692 (TDD).
- **Infrared Assistive Listening Devices:** For audience members who desire audio amplification of performances, headsets with individual volume controls are now available. You may check out the headsets at the Box Office with a driver's license. *Underwritten by a generous gift from The Knowles Foundation.*

MAC STAFF LISTING

MAC Administrative Staff

Director of the McAninch Arts Center	Diana Martinez
Business Manager	Ellen McGowan
Assistant Business Manager	Kari Schoettle
Curator, Cleve Carney Museum of Art	Justin Witte
Assistant Curator	Julia Walker
Gallery Assistant	Maria VanDyken Li
Project Coordinator, Frida Kahlo: Timeless	Molly Junokas
Education and Community Engagement Coordinator	Janey Sarther
Director of Development for Cultural Arts	Janie Oldfield
Graphic Design and Group Sales Coordinator	Kat Kazmierski
Administrative Assistant	Mandy Rakow
Student Clerical Assistants	Maria Khye, Annie Wagner

MAC Box Office and Front of House Staff

Box Office Manager	Julie Elges
Assistant Box Office Supervisors	Jim Gosling, Elise Wash
Box Office Assistants	Patrick Garon, Tatia Hegranes
Patron Services Manager	Tom Murray
Assistant Patron Services Supervisor	Deborah Kolek
Front of House Manager	Rob Nardini

MAC Resident Professional Ensembles

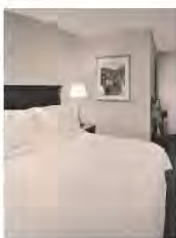
Buffalo Theatre Ensemble, Artistic Director	Connie Canaday Howard
Buffalo Theatre Ensemble, Associate Artistic Director	Amelia Barrett
Buffalo Theatre Ensemble, Business Manager	Bryan Burke
New Philharmonic, Music Director and Conductor	Kirk Muspratt
New Philharmonic, Associate Conductor and Librarian	Benjamin Nadel
New Philharmonic General Manager	Paula Cebula
New Philharmonic Personnel Manager	Karen Dickelman

MAC Design and Technical Staff

Technical Production Coordinator	Jon Gantt
Technical Theater Assistant Coordinator	Sabrina Zeidler
Costume and Make-up Design Coordinator	Kimberly G. Morris
Assistant Costume Coordinator and Stitcher	Gretchen Woodley
Production Manager	Joe Hopper
Sound and Lighting Specialist	Ben Johnson
Lighting Production Specialist	Elias Morales
Audio Production Specialist	Fisher Parsons
Stage Hands	Bobby Bryan, Caitlyn Woods



DOUBLETREE
by Hilton™
LISLE NAPERVILLE



downtown style & sophistication with suburban convenience. . .

- Beautifully Appointed Guest Rooms & Suites
 - Elegant Meeting & Banquet Rooms
- 3003 Restaurant Award-Winning Service & Cuisine
 - 24-Hour Business Center
- Beautiful Indoor Pool, Whirlpool Spa & Fitness Center

Whether you join us for a spectacular weekend get-away, exquisite dining experience or a once-in-a-lifetime special occasion banquet, rest assured our staff and accommodations will exceed your expectations.

3003 *Thirty O Three*

DoubleTree by Hilton Lisle Naperville
3003 Corporate West Drive, Lisle, IL 60532
630.505.0900 | lislenaperville.doubletreebyhilton.com

BROOKDALE

*Whatever we can do to help,
we'll do it with care.*

At Brookdale, your loved one is a member of our family. You'll find our care is delivered with knowledge gained from serving families for generations. Join our community to discover how you or your family member will feel right at home.



BROOKDALE
— SENIOR LIVING SOLUTIONS —

brookdale.com

For more information, contact (630) 446-1506
or mmetzger1@brookdale.com.

Brookdale Glen Ellyn (formerly The Meadows)
Independent Living
Assisted Living
60 North Nicoll Ave | Glen Ellyn, IL 60137
(630) 446-1600

02001

