



NATIVE *gardens*

By Karen Zacarías

Directed by Steve Scott





Dear Friends of BTE,

“Life beats down and crushes the soul and art reminds you that you have one.” – Stella Adler

Welcome to Buffalo Theatre Ensemble’s 38th Anniversary Season! We believe deeply in the soul and in art, and in the shared experience of theatre which celebrates both of these. The 24/25 season features three productions, very different in plot, but all filled to the brim with humor, joy, and shared humanity.

We are excited to continue ‘Giving Stories Life.’ Whether you are a returning subscriber or joining our ‘extended family’ for the first time, we are so excited that you will be with us this season.

Sincerely,
The Ensemble

The Ensemble

Aly Greaves Amidei[^], Robert Jordan Bailey*, Amelia Barrett* (Interim Managing Artistic Director), Bryan Burke* (Business Manager), Rebecca Cox, Lisa Dawn, Nick DuFloth, Jon Gantt, Connie Canaday Howard*, Christopher Kriz[^], Michael W. Moon, Kurt Naebig*, Laura Leonardo Ownby, Galen G. Ramsey*, William “Sandy” Smillie, Kelli Walker and Norm Woodel. For more information about BTE, visit btechicago.com.

BTE Board of Directors:

Margaret Aldworth, Robert Jordan Bailey, Amelia Barrett, Connie Canaday Howard, Ted Donner (Vice President), Elyse Kennard, Brandee Martin-Horton (President), Laura Leonardo Ownby (Secretary), Anthony Tumea (Treasurer).

Legal Counsel: Derek M. Johnson

* *Member of Actors’ Equity Association, the Union of Professional Actors and Stage Managers*

[^] *Member of United Scenic Artists, Local 829*



Buffalo Theatre Ensemble Presents

Native Gardens

by **Karen Zacarias**

Director
Steve Scott‡

Original Music & Sound Design
Christopher Kriz+^

Scenic Design
Mara Ishihara Zinky

Costume, Hair, Makeup Design
Kimberly G. Morris

Properties Design
Kimberly G. Morris

Lighting Design
Garrett Bell

Violence Director
Neil Massey±

*Interim Managing Artistic
Director*
Amelia Barrett+*

Interim Associate Artistic Director
Daniel Millhouse*

+ Member of Buffalo Theatre Ensemble

^ Member of United Scenic Artists, Local 829

* Member of Actors' Equity Association, the Union of Professional Actors and Stage Managers

‡ Member of Stage Directors and Choreographers Society

± Member of Society of American Fight Directors

There will be no intermission.

Please note: Adult themes and language.

Presented by arrangement with Samuel French, an imprint of Concord
Theatricals Corp.

The use of any recording device, either audio or video, and the taking of
photographs, either with or without a flash is strictly prohibited.
Please turn off all electronic devices, such as cell phones and watches.



Jan 30 – Mar 2, 2025 | Playhouse Theatre

CAST

Pablo Del Valle Richard Gomez
Tania Del Valle..... Sofia Tew
Virginia Butley Kelli Walker+
Frank Butley Bryan Burke+*
Ensemble..... Micheal Guzman, Alfonso Padilla,
Stephanie Ortiz, Daniela Luna

Understudies

Understudies never substitute for the listed performers unless a specific announcement is made at time of appearance. Kevin Parra for Pablo Del Valle, Abrial Bonilla for Tania Del Valle, Lyn Myers for Virginia Butley, Jerome R. Marzullo for Frank Butley.

+ Member of Buffalo Theatre Ensemble

* Member of Actors' Equity Association, the Union of Professional Actors and Stage Managers

Place: Georgetown. The back of two homes. Two back gardens. A disheveled wire fence with ivy divides them. One garden is beautiful: lush grass, very symmetrical garden beds, and flowers lining the fence. The other is unkempt: dying hydrangeas, crabgrass, a large oak tree, leaves, and acorns.

Time: September, 2016

“The difference between a flower and a weed...is a judgement.”

~unknown

DIRECTOR'S NOTE

Is there anyone alive who hasn't had a beef with their neighbor? The blaring soundtrack from the apartment upstairs, the unleashed dog who finds your flower bed particularly enticing, the campaign sign for a candidate you hate, the next-door "home improvement" which leaves your formerly sunny back porch in perpetual eclipse—such annoyances can soon become major battles, bringing the Hatfield/McCoy feud to your own backyard.

For many years such incidents have become grist for the comic mill, in movies, TV shows and plays—but playwright Karen Zacarías goes farther. *Native Gardens* takes one such feud and amplifies it into a devastatingly

DIRECTOR'S NOTE

comic portrait of American life in the 21st century, where generational and cultural values can turn a minor skirmish into a civil war. Embracing the adage that “all politics are local,” Zacarías uses the clashes of two couples in the Georgetown neighborhood of Washington, D.C. to examine the conflicts that now plague us as a society—and suggests pathways to mutual understanding that can honor personal differences while quelling the divisive battles that threaten neighborhoods...or countries. In the end, her play is an often hilarious, sometimes sobering look at our society and our world today—and where we can go from here.

~Steve Scott, Director

ACKNOWLEDGEMENTS

Native Gardens was commissioned by Cincinnati Playhouse in the Park through its Jerome Fey Endowment for New Works. It premiered at Cincinnati Playhouse in the Park in the Robert S. Marx Theatre in Cincinnati, Ohio on January 23, 2016. The production was directed by Blake Robinson, with set by Joseph P. Tilford, costumes by Bill Black, lights by Mary Lousie Geiger, and sound by Joe Payne. The production stage manager was Brooke Redler.

Acknowledgements

Buffalo Theatre Ensemble is partially supported and funded by generous grants from B2B Arts: Arts Illinois Alliance Resources, The DuPage Foundation, Benevity, Choose DuPage, The Norm Woodel Inspiration Fund, The Illinois Arts Council, and a gift from Dr. Thomas R. Scott and the late Shirley Klein Scott of Glen Ellyn through the College of DuPage Foundation and the generous support of the College of DuPage Trustees.



PRODUCTION STAFF

Stage Manager	Caitlin I. Quinn*
Assistant Stage Manager.....	Vinny Scanio
BTE Stage Management Scholar	Emily Sheehan◇
ASL Coordinator	Marijo Fiacchino
ASL Interpreters	Dan Englund, Veramarie Baldoza
Technical Director	Caitlyn Woods
Scene Shop Manager	Sabrina Zeidler
Scene Shop Crew.....	Sameer Datta, MeiXi DiBernardo, Trinity Feliciano, Brandon Delgado Gomez, Keira Hernandez, Mack Lechtenberg, Vinny Scanio, Emily Sheehan◇, Harry Smith, Kaden Van Lerberge
Costume Shop Manager.....	Kimberly G. Morris
Assistant Costume Shop Manager	Gretchen Woodley
Costume Shop Assistants	Lynn Borge, Courtney Lilly, Will Lech, Natalie Cross
Wardrobe	Natalie Cross
Scenic Charge Artist	Lydia Moss
Infection Control Safety Managers ..	Amelia Barrett*+, Daniel Millhouse*

Buffalo Theatre Ensemble Director and Acting Shadows

This is an invited opportunity for select students who are working at the level of at least Acting II and/or Directing to shadow a theater professional and gain meaningful insight into developing a character.

Acting Shadows..... Micheal Guzman, Molly Heideman,
Jimmy Kalal, Daniela Luna

+ *Member of Buffalo Theatre Ensemble*

* *Member of Actors' Equity Association, the Union of Professional Actors and Stage Managers*

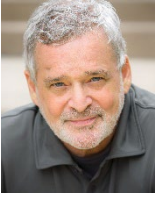
^ *Member of United Scenic Artists, Local 829*

‡ *Member of Stage Directors and Choreographers Society*

± *Member of Society of American Fight Directors*

◇ *Buffalo Theatre Ensemble Stage Management Scholarship Recipient*

CAST PROFILES

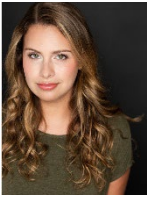


Bryan Burke+* (Frank Butley) is a member of Buffalo Theatre Ensemble. Burke's acting credits include his Jeff Nominated performance as Gunner in BTE's production of *The Outgoing Tide*. Other BTE credits include the Jeff recommended productions of *Andy Warhol's Tomato* (Mario "Bones" Bonino), *Clybourne Park* (Russ/Dan), *The Cake* (Tim), *Defiance* (Col. Littlefield), *The 39 Steps* (Richard Hannay) and *Good People* (Mike), as well as *Red, White and Blacklisted* (Christopher Trumbo), *Leading Ladies* (Leo), *Moon Over Buffalo* (George), *Faith Healer* (Frank), *Frankie and Johnny in the Clair de Lune* (Johnny), Italian-American Reconciliation (Huey), *Sleuth* (Andrew Wyke), *The Melville Boys* (Lee), *Noises Off* (Frederick Fellows/ Phillip Brent) and *Visiting Mr. Green*. Other acting credits include *The Trip to Bountiful*, *The Lonesome West*, *Cat on a Hot Tin Roof*, *The Living*, *Picasso at the Lapin Agile*, *Look Homeward Angel*, *Warrior* and *Hamlet*. Burke also directed *Frozen*, *Shining City*, *Love Song*, *Stones in His Pockets*, *The Weir* and *Three Days of Rain* for BTE. College of DuPage directing credits include *Defying Gravity*, *Anton in Show Business*, *The Laramie Project*, and *The House of Ramon Iglesia*. Burke was also a founding member of Chicago's Cactus Theatre Company. Acting credits with The Cactus Theatre Company include *Golden Boy*, *Fishing*, *Paradise Lost* and *Waiting for Lefty*. He also directed their productions of *Hurly Burly* and *Valentine's Day*. Burke holds a BGS degree in Theatre from the University of Kansas. He is also a member of Actors' Equity Association.



Richard (Rich) Gomez (Pablo Del Valle) is a Peruvian/American Actor from Chicago IL. He's worked on a few other theatre productions but most recently he understudied POLONIUS and CLAUDIUS in Court Theatre's production of *Rosencrantz And Guildenstern Are Dead*. He has a background and made his start as an improviser and holds a Comedy Writing and Performance Degree from Columbia College Chicago. Gomez is extremely excited to be joining this Buffalo Theatre Ensemble production!

CAST PROFILES



Sofia Tew (Tania Del Valle) is so excited to be making her Buffalo Theatre Ensemble debut! She is a Colombian/American actor from Houston, Texas. Some of Tew's acting credits include *La Gringa* and *Back In The Day: An 80's House Dansical* (UrbanTheatre), *The Death of Gaia Divine* (Momentary Theatre), *The River Bride* (Halcyon Theatre), *The Secret Yes* (Filament Theatre), *Breach* (Victory Gardens, U/S performed), and *Enough To Let The Light In* (Teatro Vista, U/S). Tew graduated from The Theatre School at DePaul University.



Kelli Walker+(Virginia Butley) has appeared in *The Wickhams: Christmas at Pemberley*, *Into the Earth With You*, *Clybourne Park*, *Naperville*, *Miracle on South Division Street*, *The Ding Dong*, *Outside Mullingar*, *Good People*, *The Underpants*, *Frozen*, and *Love Song* (Buffalo Theatre Ensemble, ensemble member); *Native Gardens* (Williams Street Repertory, U/S, performed); *Into the Breeches* (iambe theatre ensemble); *The Humans* (Redtwist Theatre); *A Doll's House* (Raven Theatre); *Roast* and *In the Wake* (The Comrades); *Angry F*gs* (Steppenwolf Garage/Pride Films and Plays). Understudy roles include *For Peter Pan on Her 70th Birthday* (Shattered Globe); *Roz and Ray* (Victory Gardens Theater); *Caught and Stupid F#cking Bird* (Sideshow Theatre Company). Select Indianapolis credits include *Stuff Happens*, *Boston Marriage*, *Proof*, *The Vagina Monologues*, and the one-woman show *Callie's Tally* (Phoenix Theatre); *The Living, Arms and the Man*, and *Romeo and Juliet* (Edyvean Repertory Theatre); *Wit* (Purdue University symposium with Pulitzer Prize-winning playwright Margaret Edson). Walker graduated from Butler University and Northern Illinois University.

Micheal Guzman (Ensemble) is eager to continue working with Buffalo Theatre Ensemble as his previous credits include, *The Wickhams: Christmas at Pemberley* (Student shadow for Fitzwilliam Darcy). Guzman is also a current student and performer for College of Dupage. His previous credits include *The Mousetrap* (Major Metcalf), *The Mystery of Edwin Drood* (Neville Landless), *Good Kids* (Tanner), *Twelfth Night* (Fabian), and *A Christmas Carol* (Shopper).

CAST PROFILES



Daniela Luna (Ensemble) is thrilled to continue her work with Buffalo Theatre Ensemble. A previous BTE Stage Management Scholarship recipient for *Into The Earth With You*, Luna is also a current student and college theatre performer at College of DuPage. Her previous credits include *The Curious Incident of The Dog in The Night-Time* (Lady in Street), *Once Upon a Mattress* (Second Lady), *Good Kids* (Kylie), and *A Christmas Carol* (Elizabeth). She is additionally a proud recipient of both the Music Boosters and New Student Orientation Leader Scholarships.



Stephanie Ortiz (Ensemble) is delighted to begin her journey with Buffalo Theatre Ensemble. Currently a student at the College of DuPage, she previously appeared in *The Mystery of Edwin Drood* (Bazzard). Other favorite credits include *A Midsummer Night's Dream* (Puck), *Mamma Mia!* (Rosie), and *Chicago* (Mary Sunshine), all at Addison Trail High School Theatre. Ortiz was also honored as “District 88’s Best for Performing Arts” and a “Glenn Bullock Scholarship” Recipient.



Alfonso Padilla (Ensemble) is very excited to return with Buffalo Theatre Ensemble. His previous Buffalo Theatre Ensemble credits include *The Outsider* (student shadow for A.C Peterson). Padilla is also a student at College of Dupage and a college theatre performer. His college theatre credits include *A Christmas Carol* (Joe), *Twelfth Night* (Officer 1), and *The Curious Incident of the Dog in the Night-Time* (Drunk 2).

UNDERSTUDY PROFILES



Abrial Bonilla (Understudy: Tania Del Valle) is an Irish/Puerto Rican actor from Niceville, Florida and is thrilled to be making her Buffalo Theatre Ensemble debut! Some of Bonilla’s theatre credits include *Footloose*, *Talley’s Folly*, and *Agnes of God* (Mattie Kelly Arts Center), and she can be seen in the film *All Happy Families* as Brianna. She graduated from the Chicago College of Performing Arts in 2021 and recently earned her Masters degree in Arts Administration from Boston

UNDERSTUDY PROFILES

University. She's very happy to be back in Chicago and wants to thank her family, friends, and Gray Talent Group for their support.



Jerome R. Marzullo (Understudy: Frank Butley) is delighted to work with Buffalo Theatre Ensemble for the first time. A native Chicagoan, he lived in Minnesota's Twin Cities for years, where roles include *Anna in the Tropics* (Santiago), *The Petrified Forest* (Duke Mantee), *Macbeth* (Macduff), *Hamlet* (Claudius), *Much Ado About Nothing* (Don Pedro) *A Midsummer Night's Dream* (Bottom), *Henry V* (Constable of France), *Romeo and Juliet* (Capulet), *The Rivals* (Sir Anthony Absolute), *Amadeus* (Count Orsini Rosenberg), *The Play's the Thing* (Sandor Turai), *The Goat or Who is Sylvia* (Martin Gray), *Bus Stop* (Virgil Blessing), *1940's Radio Hour* (Johnny Cantone), and *Glengarry Glen Ross* (Ricky Roma). Roles in Chicago include *Bard Fiction* (The Wolf), *Corleone* (Don Vito Corleone), *A Man for All Seasons* (Cromwell), *Of Mice and Men* (George), *Our Town* (The Stage Manager), *The Diary of Anne Frank* (Mr. Dussel), *The Sunshine Boys* (Willy Clark), *Awake and Sing* (Uncle Morty), *Pygmalion* (Albert Dolittle), *Noises Off* (Selsdon Mowbray), *Born Yesterday* (Harry Brock), *Wedding Gotta Bingo* (Rudy), *Madea* (Creon/Aegeus), and *Much Ado About Nothing* (Leonato). Directing credits include *Dial M For Murder*, *Oh God*, and *The Real Inspector Hound*. Films include the *Spirits of St. Paul-The Gangster Era* (Harry Sawyer), *Before Dallas* (Paul "The Waiter" Ricca), *Jada* (Charles Murphy), and *Where Sweet Dreams Die* (Jimmy). He can sometimes be seen in various venues playing congas, with the band Once is Not Enough. He would like to thank Amelia and BTE for giving him this opportunity.



Lyn Myers (Understudy: Virginia Butley) is delighted to return to the professional stage with Buffalo Theatre Ensemble and *Native Gardens*. After a 30 year hiatus from acting, she appeared last year in COD productions *Arsenic and Old Lace* (Aunt Martha) and *Mousetrap* (Mrs Boyle). Previous Chicago stage credits include *Renfield* (Miss Mina), *Agnes of God* (Agnes), and *Answers* (Mandy). Myers was a founding member of the Red Key Theater Company and has appeared in a variety of local and national television commercials as well as industrial films. In an interesting twist, she has spent the last 20 years as an outdoor environmental educator and is a backyard beekeeper with

UNDERSTUDY PROFILES

her incredible husband, an electrical engineer for a defense contractor. She is grateful to her family and friends for all their support in this crazy, wonderful second chance.



Kevin Parra (Understudy: Pablo Del Valle) is a Colombian/American actor and is excited to make his BTE debut. Credits: Jack in *Into the Woods* (Kokandy), *New Faces Sing Broadway NOW* (Porchlight Music Theatre), Swing – Dodgy/Duchess + Nigel/Dormouse in *Alice by Heart* (Kokandy), Otto/Ulbrecht in *Spring Awakening* (Flint Repertory Theater), Chip and Leaf u/s in *Spelling Bee* (Music Theater Works), Sean Bateman in the Jeff Award-winning Chicago Premiere of *American Psycho* (Kokandy), Judah in *Joseph...* (Big Noise Theatre). A very special thanks to his partner, Kevin, for his never-ending love and support. Parra is represented by Gray Talent Group. Instagram: @KPYouKnowMe.



PLAYWRIGHT PROFILES

Karen Zacarías was recently hailed by *American Theater Magazine* as one of the ten most-produced playwrights in the US. Her award-winning plays include *The Copper Children*, *Destiny of Desire*, *Native Gardens*, *The Book Club Play*, *Legacy of Light*, *Mariela in the Desert*, *The Sins of Sor Juana*, and the adaptations of *Just Like Us*, *Into the Beautiful North*, and *How the Garcia Girls Lost Their Accent*. She is the author of ten renowned TYA musicals (including *Ella Enchanted: The Musical*) and the librettist of several ballets.

She is one of the inaugural resident playwrights at Arena Stage, a core founder of the Latinx Theatre Commons – a large national organization of artists seeking to update the American narrative with the stories of Latinos – and she is the founder of the award-winning Young Playwrights’ Theater (YPT). YPT was cited by the Obama administration as one of the best arts-education programs on the nation.

Zacarías was voted 2018 Washingtonian of the Year by *Washingtonian Magazine* for her advocacy work involving the arts. She is an inaugural 2019 Sine Fellow for Policy Innovation at American University and is selected by The League of Professional Theatre Women to receive the 2019 Lee Reynolds Award, given annually to a woman in theater who has helped illuminate the possibilities for social, cultural, or political change. In 2021, she was awarded a United States Artists Fellowship award.

She lives in Washington, D.C. with her husband and three children.
www.KarenZacarias.com.

Special thanks to
Lewey Q's
Tap
Beer. Pizza. Wings. Sports

427 N Main Street, Glen Ellyn, IL 60137

ARTISTIC DIRECTOR PROFILES

Amelia Barrett*+ (Interim Managing Artistic Director) has acted, directed, and coached dialect for many Buffalo Theatre Ensemble productions, most recently directing *Miss Bennet: Christmas at Pemberley*. She is a proud member of the acting ensemble and calls the theater her artistic home. As an actor, she has appeared with other local, regional, and international companies. She is Chair of the College of DuPage Theater Department, where she has directed well over 60 productions. She is a proud member of Actors' Equity Association as well as the Screen Actors Guild and the American Federation of Radio and Television Artists. She holds a Master of Fine Arts degree in acting from the University of Texas at Austin and a Graduate Certificate in Laban Movement Analysis from Columbia College Chicago.

Daniel Millhouse* (Interim Associate Artistic Director) is grateful and thrilled to be joining Buffalo Theatre Ensemble as Interim AAD having worked with BTE as an actor and stage manager since 2016. Previous productions with BTE as an actor include *The Wickhams: Christmas at Pemberley*, *Miss Bennet: Christmas at Pemberley*, and *The 39 Steps*, and as a stage manager for *Naperville* and *Season's Greetings*. Beyond BTE his theater credits also include shows with the Michigan Shakespeare Festival, Great Lakes Theater, Idaho Shakespeare Festival, Shakespeare Project of Chicago, Remy Bumppo, A Crew of Patches, ShawChicago, and Second City Training Center. You may also recognize him from his work on the *Call of Duty* video game franchise or his episode of *Chicago Fire*. You can also hear his voice on podcasts as well, including *The Vanishing Act* and The Onion's *The Topical*, to name a few. Millhouse is an Associate Professor at the College of DuPage where he directs productions for College Theater. He received his MFA in Acting/Directing from the University of Wisconsin-Madison and his BS in Theater Arts from Eastern Michigan University. He is a proud member of Actors' Equity Association. Prior to BTE, Millhouse co-founded and served as Managing Director for Misalliance Repertory Theatre.

ARTISTIC PROFILES

Steve Scott‡ (Director) returns for his eleventh production at BTE, where he most recently directed *The Outgoing Tide*. For over 30 years he served as Producer at the Goodman Theatre and is currently an artistic associate and board member at the Goodman; his directing credits there include *The Santaland Diaries*; *Ah, Wilderness*; *Vanya and Sonia and Masha and Spike: Horton Foote's Blind Date*; the world premiere of Tom Mula's *Jacob Marley's Christmas Carol*; and six editions of *A Christmas Carol*. Scott has directed at a wide variety of professional companies in Chicago; recent productions include *Mothers and Sons* at Northlight, *Richard III* at Promethean, *King Lear* and *The Humans* at Redtwist (where he is a company member), *Why Torture is Wrong...and the People Who Love Them* at Eclipse Theatre, *Next to Normal* at the Dunes Summer Theatre (where he is artistic director), *Cat on a Hot Tin Roof* at the Skokie Theatre, and *Summer and Smoke* and *Stage Door* at the Theatre Conservatory of the College of Performing Arts at Roosevelt University, where he has been on the faculty for over two decades. He has also taught at Columbia College Chicago, Loyola University of Chicago, Northwestern University, Northern Illinois University, and the Latin School of Chicago; and serves on the board of Season of Concern. For his work as a director, Scott has received six Jeff nominations, an After Dark Award, and numerous Broadway World nominations; he received the 2017 Special Jeff Award for his contributions to the Chicago theater community and the 2018 Lifetime Achievement Award from the League of Chicago Theatres. He is a member of the Stage Directors and Choreographers Society (SDC).

Mara Ishihara Zinky (Scenic Design) is a Chicago-based scenic designer. Recent design credits include *Arcadia* (The University of Chicago), *Enough to Let The Light In* (Contemporary American Theatre Festival), *The Porch on Windy Hill* (Northlight Theatre, Merrimack Rep, Weston Theatre Company, People's Light), *Ms Holmes and Ms Watson* (Third Avenue Playworks), and *Dial "M" For Murder* (Northlight Theater). To learn more, please visit mizinky.com.

Kimberly G. Morris (Costume, Hair, Makeup and Properties Design) is excited to work again with Buffalo Theatre Ensemble. Based in Wheaton, she is the costume, hair and makeup designer for the College of DuPage. Favorite past projects: recreating five outfits worn by Frida Kahlo for the Frida Kahlo Timeless exhibit and garments for the

ARTISTIC PROFILES

WARHOL exhibit at the CCMA at COD; puppet design/build of Allan the dog for the movie *Allan the Dog the Movie*; costumes for *The Merry Widow*, *The Mikado* and *La Traviata* with New Philharmonic; props design for *100 Dresses* and *A Year with Frog and Toad* with Chicago Children's Theatre; costume and puppet design for *Blue Planet* with Akvavit Theatre; and puppet, mask and costume design for *Neverwhere* and *Island of Dr. Moreau* with Lifeline Theatre. Upcoming projects include *It's Only a Play* and *Our Town* with College of DuPage and pieces for the Hokusai exhibit with CCMA. Chicagoland design credits include: Babes with Blades Theatre Company, Stage Left Theatre, Fox Valley Repertory, Noble Fool Theatricals, Wilmette Arts Center, NWHS and MEHS. National credits include Ball State University, American Shakespeare Center, Shenandoah Shakespeare Express, Heritage Repertory Theatre, and Tecumseh!.

Christopher Kriz +^ (Original Music and Sound Design) is a composer and sound designer based in Chicago and an Ensemble Member with BTE. Previous BTE designs include *The Outgoing Tide* (2 Jeff nominations), *The Wickhams: Christmas At Pemberley*, *Andy Warhol's Tomato*, and dozens of others. Chicago design credits include: Goodman Theatre, Steppenwolf, Chicago Shakespeare, Chicago Symphony Orchestra, Court Theatre, TimeLine Theatre, Remy Bumpo, Victory Gardens, Northlight Theatre, Shattered Globe, The Gift Theatre, and many others. Regional: Seattle Repertory Theatre, Kansas City Repertory Theatre, Indiana Repertory Theatre, Alabama Shakespeare Festival, Peninsula Players, American Stage Theatre, Crossroads Theatre, TheatreSquared, Montana Shakespeare, Nebraska Repertory Theatre, Michigan Shakespeare Festival, and others. A winner of five Joseph Jefferson Awards, Kriz is a proud member of United Scenic Artists 829. For more of his work, please visit christopherkriz.com.

Garrett Bell (Lighting Design) is a lighting designer based in Chicago. Recent Lighting Design credits with BTE include, *The Outsider*, *Into the Earth With You*, *Miss Bennet: Christmas at Pemberley*, *Andy Warhol's Tomato*, *Season's Greetings*, *Clybourne Park*, *Naperville*, and *The Cake*. Other recent credits include *Coronation* with Refracted Theatre Co., *Royko: The Toughest Man in Chicago*, *Arcadia* with UChicago TAPS, *Tecumseh!* with the Scioto Society, *Heisenberg* (lighting and scenic) with Griffin Theatre, *Sweat* with The Loop Players,

ARTISTIC PROFILES

Disconnect at Wheaton College, and *Future Perfect* with Bellissima Opera. More can be found at www.garrettmell.com.

Neil Massey± (Violence Director) is a Certified Teacher in the Society of American Fight Directors and has been involved in stage combat for over 30 years as a performer, choreographer, and teacher in the US and abroad. Massey has served on the Governing Body of the SAFD, as Assistant Coordinator for the National Stage Combat Workshop at UNLV, and as Coordinator for Winter Wonderland Workshop, the Chicago Regional Stage Combat Workshop. Locally he has taught stage combat at Roosevelt University, DePaul University, Columbia College, and College of DuPage. His choreography has been seen on various stages throughout Chicago, including Chicago Shakespeare, The Goodman, Steppenwolf, and others. He is thrilled to return to Buffalo Theatre Ensemble for another production. An accomplished sword cutler, his company, Rogue Steel, supplies theatres, universities, and individuals all over the world with high quality stage combat equipment.

Dining Partners

Eat, drink & enjoy -
MAC dining partners

For all your pre-show meals and post-show bites, we are thrilled to be partnering with these neighborhood restaurants. Our dining partners offer MAC patrons exclusive discounts and special offers. All MAC ticket orders receive coupons to these local favorite restaurants!



STAGE MANAGER PROFILES

Caitlin I. Quinn* (Stage Manager) is excited to work on *Native Gardens* returning after *The Wickhams: Christmas at Pemberley* with Buffalo Theatre Ensemble! She is proud of her stage management work on *The Addams Family*, *Little Shop of Horrors*, and *Any Other Name* at Williams Street Rep. With more than 15 years of prior theatre experience, it's always thrilling to work somewhere new. Quinn is a proud member of Actors' Equity Association. Special thanks to her partner, Jim, and the BTE team for welcoming her on this journey of collaboration.

Vinny Scanio (Assistant Stage Manager) returns to BTE as a professional assistant stage manager after working on *The Wickhams: Christmas at Pemberley*. Previous Buffalo Theatre ensemble credits include *Andy Warhol's Tomato* (student shadow for Mario 'Bones' Bonino) and *The Outgoing Tide* (student shadow for Gunner). Scanio is also a former recipient of the John Belushi Stage Management scholarship. Previous management experience includes *Born Yesterday* (stage manager) at the College of DuPage.

Emily Sheehan ◊ (BTE Assistant Stage Manager Scholar) is excited to be working with BTE after interning on *The Wickhams: Christmas at Pemberley*. Previous stage management experiences: *Once Upon A Mattress* (Stage manager), *Twelfth Night* (Stage manager), and *Mystery of Edwin Drood* (Assistant stage manager). Sheehan is a recipient of the John Belushi Stage Management Scholar, John Belushi/Second City Scholar, and a John Belushi Choral Scholar.

+ Member of Buffalo Theatre Ensemble

* Member of Actors' Equity Association, the Union of Professional Actors and Stage Managers

^ Member of United Scenic Artists, Local 829

‡ Member of Stage Directors and Choreographers Society

± Member of Society of American Fight Directors

◊ Buffalo Theatre Ensemble Stage Management Scholarship Recipient

Buffalo Theatre Ensemble's mission is to provide a forum in which artists, scholars, writers, students and community members explore new ideas and provocative issues through the production of quality theatre for the enjoyment of its audiences.



Buffalo Theatre Ensemble (“BTE”) is a 501(c)(3) not for profit, professional theatre company in residence at the McAninch Arts Center (MAC) on the campus of College of DuPage.

Ticket revenue only covers a portion of Buffalo Theatre Ensemble’s operating expenses. The rest must be raised through contributions, the majority of which comes in the form of gifts from individuals like you.

It’s because of our close circle of friends that BTE is able to explore new ideas and provocative issues through the production of professional, high quality theater for the enjoyment of its audiences.

The resident ensemble brings professional theater to DuPage County and at the same time enhances the training of students in Theater at College of DuPage, providing opportunities for students to develop their talents alongside working theater artists.



Scan this code to give today!

Buffalo Theatre Ensemble is a designated 501(c)(3) not-for-profit organization. Your donation may be tax deductible to the extent permitted by law. Please check with your tax advisor.

**The MAC offers all of this for you,
but we can’t do it without you!**

**YOUR GIFT HELPS PROVIDE CULTURAL
VITALITY THAT ENRICHES AND ENTERTAINS!**



GIVE TODAY! TO SUPPORT THE MAC
visit us at foundation.cod.edu or call (630) 942-3088



FRIENDS OF THE BUFFALO THEATRE ENSEMBLE

For 38 years, Buffalo Theatre Ensemble (BTE) has played a major role in the cultural community of College of DuPage and the surrounding area, through the marriage of committed permanent ensemble members, fine Chicagoland artists, and great theatrical works. We gratefully acknowledge the donors who have made it possible to return for our 38th season.

This list of donors reflects contributions made from January 2020 through December 2024. While we carefully prepared this listing, we recognize that errors may occur. Please accept our apology if you are not properly represented on this list and contact BTE at ab@btechicago.com so we may correct our records.

Benefactor (\$3000 and above)

Anonymous
Robert Bailey
Katherine Balek
Connie Canaday
Howard
Cleve E. Carney Fund
DuPage Forever Fund
DuPage Foundation
Jean Hawkinson
Illinois Arts Council
Joseph and Beth
Kindlon Fund
Margaret McCoy
Karen Owen
John K. Rutledge &
Betty Joseph
Thomas Scott
Scott Vessely
Kathy Wessel
Donald Westlake
Norman Woodel

Charlene Kornoski-
Duvall
Larry Larson
Paula Chuchro and
James Lenihan
Harold & Karyl
McAninich
Kathleen McCullough
David J. and Donna M.
Millhouse
Joan Morrissey
Tom & Karen Pulver
Salesforce.com Inc
Sandra Sansone
Brennan
Randy Johnson & Lisa
Savegnago
Kristin & Peter
Shulman
James & Linda
Smedinghoff
Linda & Barry Tusin
Bonnie M. Wheaton

George and Mary Hall
Nancy Headen
John & Emily Herndon
In Honor of Olivia
Richard Jarman
Cynthia Ann & Andrew
Johnson
Lou Ann Kaletka
Gayan
Barbara Kamm
John & Rita Meier
Kevin O'Brien
Carolyn & Eric
Oesterle
Tina Rudins
Barb & Doug Rundell
Haruo Kurokawa and
Hal Temple
Kelli Walker
Rich & Kathy Wilders
Robert Wunderlich
Erin & Jeff and Julie
Wymore
Mary Ann & Walt
Zlotow

Dream Maker (\$1000–\$2999)

Mary & Renato Bacci
Deborah Borge
Sharon Brockmeier
Peggy Connolly
John and Pamela
Dalby
Kathleen Drennan
Dr. James & Judy
Dunlap
Debra Fulks
Phil & Amy Gelber
Jon & Ruth Good
Art Hirsch

Imaginer (\$500–\$999)

Lynette Arendt
Amelia Barrett
Michael Boyna
Gary Dobson
James and Marie
Drasal
Donald and Catherine
Fischer
Russell and Judy Flores
Glen Ellyn Chamber of
Commerce
Charles & Phyllis
Goodman
Ida Hagman

Director's Circle (\$250–\$499)

John J. Bryant Fund
Fran Kravitz and
Daniel Edelman
Fran Kravitz
Michael McKeon
Carol & Michael Moon
John M. Mulherin
Michael J. and Melissa
F. Nachman
Gwen O'Loughlin
Peggy Aldworth

FRIENDS OF THE BUFFALO THEATRE ENSEMBLE

Bob and Betty Becker
 John E. & Suzanne R.
 Buntrock
 Patrice Conaway
 Gary Harper
 Bob & Sue Hartman
 Richard & Mary Kuhn
 John L. Ladle
 Tipton H McCawley
 Martha McCoy
 Jim & Lorraine
 Paulissen
 Sarah & Roger
 Poepfel
 Kenneth Robin
 Gail Robinson
 Marlene & Robert
 Rosecrans
 Kathy Schleicher
 Steve Scott
 Patricia Spence
 Gloria P. & Kennan R.
 Sullivan
 Jon Summerbell
 Nancy Svoboda
 Paul & Colleen Trinko
 Larry Ward

Rising Star (\$50 to \$249)

Anonymous
 Christine Aument
 Daniel Barnett
 Joy & Bob Barrell
 Eugene Benner
 Blackbaud Giving Fund
 Peter Bostock
 James Boves
 Elaine Brodemus
 Joanne Brown
 Marcia & Arthur Burke
 Patrick and Joanne
 Callahan
 Bonnie Campbell
 Abbey Canaday
 Howard
 Larry & Karen
 Christensen
 Michael Church
 Allison Cohen

Shiela Cosco
 Lisa Dawn Curran
 Barb Danvir Hepfer
 Erin Diener Matull
 Julia Dilberti
 Victoria Donnelly
 LuEllen Doty
 Andrea Duffy
 Robert Dulski
 Gary Ernst
 Ruta Freimanis
 Sally & William
 Fairbank
 Ruta Freimanis
 Jackie Friedman
 Bonnie L. and Jeffrey
 L. Gahris
 Karen Gaydos
 Robin George
 Chris Gerrib
 Fran Gilles
 Peter Glassman
 Dawn Goldhirsh
 Craig D. Goldwyn
 John & Lisa Gorak
 Kathleen Graffam
 Elisabeth and Mark
 Grzywa
 Edward M & Cindy L
 Hegarty
 Lisa Hada
 Cassy Harlo Schutz
 Rebekah & Rodney
 Harris
 Paul & Floy Haschke
 James & Ann Helt
 John C & Stephanie B
 Iglehart
 Jan T. and Kathryn
 Johansson
 Dennis Johnson
 Mary Johnson
 Bernard Jokiel
 Alisa Jordheim
 Jean Joslyn
 David Kee
 Kay & Rick Kehoe
 Thomas Kelly
 Virginia and Charles
 Klingporn

Deborah Kolek
 Mary Kraska
 Linda Kulikowski
 Sally & Martin
 Kuttesch
 Cynthia Laughlin
 Ida Lee
 Paul & Eileen Lefort
 Virginia Lennon
 Robert & Jean Lindsey
 Holly Malloy
 Tom Manak
 Corrine Marrinan
 Tripp
 Walter Martineau
 John Mategrano
 Rich Matheson
 Carolyn May
 David and Carolyn
 May
 Jacqueline McGrath
 Jill McWilliams
 Diane Meiborg
 Tom Mikrut
 Patricia Miller
 James Miloobowski
 Jane Moore
 Patricia Motto
 Frank Mraz
 Stanley Nardoni
 Network for Good
 Donald & Mary Ellen
 Newsom
 Jane Oldfield
 Jean R. and Joanne
 Oliphant
 Judith Olson
 Kenneth Orenic
 Dianne Paulini
 Mark Pfefferman
 Edward & Bernadine
 Pillar
 Pamela Pipkin
 Terra Stetz & Rita
 Potter
 Cynthia & Thomas
 Power
 Lynda Pratscher
 Joe Pundzak
 Pat Read

FRIENDS OF THE BUFFALO THEATRE ENSEMBLE

Mary Ellen Reedy
 Carol & Alfred Reiman
 Gertrude Rigg
 Bruce Rodman
 Judith Ronaldson
 Daniel F. and Barbara
 Roos
 Gail Root
 Renee Rosen
 Susan Ross
 Gus & Georgia
 Rousonelos
 Jim Ruffing
 Mark Sand
 Mary Kay Schultz
 Patricia & Richard
 Schwarze
 Virginia Schweinberg
 and Family
 Gerry Sczygiel
 Wei Shissler
 Donna Jean Simon
 Iona Simon
 Michael Sitrek
 M.D. & Laura Skeet
 Susan Spooner
 Stephen Squier
 Donald Stading

Louis & Marilyn
 Steenwyk
 Helen Szymanski
 Kathleen Talenco
 Nancy and Kevin
 Taylor
 Dr. and Mrs. Anthony
 Taylor
 Joseph & Mary Beth
 Turek
 Barbara Urick
 Alan L. & Linda K.
 Varney
 James & Carolyn
 Vondran
 Roy & Janice Wahnert
 Vince & Gloria Walsh-
 Rock
 James Weichel
 Werner Weiss
 Scott Wetle
 Mary Wiesen
 Bobbi & John
 Wheatley
 Tod D. Willman
 William Womack

Business Partners:
 Adelle's

Cabernet and Co.
 Club Pilates Glen Ellyn
 Emergence See
 Photography
 The Foxtail
 Fuschia Glen Ellen
 The MAC
 Gia Mia
 The Gift Theatre
 Gindo's Spice of Life
 Health Track
 Hot Worx Wheaton
 Lewey Q's Tap, Beer,
 Pizza, Wine, Spirits
 Maise and Mash
 Mindful Movements
 Pilates & Yoga
 Oil Lamp Theatre
 Paramount Theatre
 Peet's Coffee Downers
 Grove
 Yoga Six Downers
 Grove
 Remy Bumpo
 Theatre
 Silver Fox Travel
 Skeleton Key
 Two Hound Red



BTE Board of Directors:

Margaret Aldworth, Robert Jordan Bailey, Amelia Barrett, Connie Canaday Howard, Ted Donner (Vice President), Elyse Kennard, Brandee Martin-Horton (President), Laura Leonardo Ownby (Secretary), Anthony Tumea (Treasurer).
Legal Counsel: Derek M. Johnson

Members Emeriti: Robert Cappetta, Peggy Connolly, Rebecca Cox, Lisa Dawn, Ida Hagman, Diane Hicks, Richard Jarman, Michael J. McCoy, Joan Morrissey, Kurt Naebig, Carolyn Oesterle, John K. Rutledge, Sandra Sansone Brennan, Colleen Trinko, Kelli Walker, Kathy Wessel, Bonnie Wheaton, Richard Wilders, Norm Woodel, Mary Ann Zlotow

STUDENT VOLUNTEERS

Nick Washington	Vinny Scanio	Olivia Reamer
Emily Sheehan	Ashley Chavez	Carolyn Goldsmith
Chris Yee	Elmeka Elme	

VOLUNTEERS

Peggy Aldworth	Julia DiLiberti	Caroline	Erin Lynn Ransford
Quinn Bayola	Melissa Donner	McGowan	Erica Sandvig
Debbie Borge	Andrea Ficarelli	Isola Metz	Debbye Simpson
Bill Bulger	The Late Joan	Barb Murphy	Nancy Svoboda
Benjamin	Frank	Jaden and Jeff	Donald Westlake
Caracello	Ken Frank	Ownby	Mary Ann Zlotow
Gayatri Choudhary	Rex Howard	Elaine Patrick	
Peggy Connolly	Paul LeFort	Tony Payne	
Christopher	Brett Mathieson	Pam Pipkin	
Corrigan	Maggie McCoy	Lynda Pratscher	



btechicago.com



facebook.com/BuffaloTheatreEnsemble



[BTEattheMAC](https://twitter.com/BTEattheMAC)

HOUSE NOTES

- Cameras and recording devices are not allowed in the theater and are prohibited by our contracts with the artists.
- Smoking is not permitted in the theater or on campus.
- For your comfort and security, all backpacks and large bags must be checked.
- Please turn off all cell phones and any other alarms while in the theater.
- Emergency phone number at College of DuPage Police Department for after-hour calls is (630) 942-2000.
- Latecomers seated at discretion of the House Manager.
- Groups of 10 or more may contact (630) 942-3026 or grouptix@cod.edu to arrange for group discounts.
- If you notice a spill in the theater, please notify an usher.
- McAninch Arts Center volunteers are people who assist the house staff in areas of ticket taking, ushering and general management during performances. To get involved, call (630) 942-3705.
- **For Americans with Disabilities Act** accommodations, call (630) 942-2141 (voice) or (630) 858-9692 (TDD).
- **Infrared Assistive Listening Devices:** For audience members who desire audio amplification of performances, headsets with individual volume controls are now available. You may check out the headsets at the Box Office with a driver's license. *Underwritten by a generous gift from The Knowles Foundation.*

MAC STAFF LISTING

MAC Administrative Staff

Director of the McAninch Arts Center.....	Diana Martinez
Business Managers	Cassi Fanelli, Molly Junokas
Project Manager	Kari Schoettle
Assistant Business Manager.....	Brianna Garcia
Curator, Cleve Carney Museum of Art	Justin Witte
Assistant Curator.....	Julia Walker
Gallery Assistant	Madelene Przybysz
Marketing and Patrons Services Coordinator	Janey Sarther
Graphic Designer.....	Wendy Melgar
Director of Development for Cultural Arts.....	Jon Nadel
Education and Community Engagement Coordinator.....	Mandy Rakow
Office Manager/Events Coordinator	Morgan Bainbridge
Student Clerical Assistants	Katie Aviles, Kate Cadag

MAC Box Office and Front of House Staff

Box Office Manager	Julie Elges
Assistant Box Office Supervisors	Daniel Arzola, Elise Wash
Box Office Assistants.....	Patrick Garon, Joanne Hunt
Patron Services Manager	Tom Murray
Assistant Patron Services Supervisor	Deborah Kolek
House Manager/Volunteer Coordinator	Rob Nardini

MAC Resident Professional Ensembles

Buffalo Theatre Ensemble, Interim Managing Artistic Director	Amelia Barrett
Buffalo Theatre Ensemble, Interim Associate Artistic Director	Daniel Millhouse
Buffalo Theatre Ensemble, Business Manager	Bryan Burke
New Philharmonic, Music Director and Conductor	Kirk Muspratt
New Philharmonic, Associate Conductor and Librarian	Benjamin Nadel
New Philharmonic General Manager	Paula Cebula
New Philharmonic Personnel Manager.....	Karen Dickelman
New Philharmonic Assistant Librarian.....	Ryan Michel

MAC Design and Technical Staff

Technical Production/Lighting/Sound Coordinator.....	Richard Arnold, Jr.
Technical Theater Assistant Coordinator	Sabrina Zeidler
Costume and Make-up Design Coordinator	Kimberly G. Morris
Assistant Costume Coordinator and Stitcher	Gretchen Woodley
Production Manager	Joe Hopper
Sound and Lighting Specialist.....	Ben Johnson
Lighting Production Specialist	Elias Morales
Audio Production Specialist	Fisher Parsons
Events Production Specialist/Tech. Director – BTE	Caitlyn Woods
Stage Hands	Bobby Bryan, Zak Zubka