



THE

Wickhams

CHRISTMAS AT PEMBERLEY



by Lauren Gunderson and Margot Melcon
Directed by Connie Canaday Howard



Dear Friends of BTE,

“Life beats down and crushes the soul and art reminds you that you have one.” – Stella Adler

Welcome to Buffalo Theatre Ensemble’s 38th Anniversary Season! We believe deeply in the soul and in art, and in the shared experience of theatre which celebrates both of these. The 24/25 season features three productions, very different in plot, but all filled to the brim with humor, joy, and shared humanity.

We are excited to continue ‘Giving Stories Life.’ Whether you are a returning subscriber or joining our ‘extended family’ for the first time, we are so excited that you will be with us this season.

Sincerely,
The Ensemble

The Ensemble

Aly Greaves Amidei[^], Robert Jordan Bailey⁺, Amelia Barrett⁺ (Interim Managing Artistic Director), Bryan Burke⁺ (Business Manager), Rebecca Cox, Lisa Dawn, Nick DuFloth, Jon Gantt, Connie Canaday Howard⁺, Christopher Kriz[^], Michael W. Moon, Kurt Naebig⁺, Laura Leonardo Ownby, Galen G. Ramsey⁺, William “Sandy” Smillie, Kelli Walker and Norm Woodel. For more information about BTE, visit btechicago.com.

BTE Board of Directors:

Margaret Aldworth, Robert Jordan Bailey, Amelia Barrett, Connie Canaday Howard, Ted Donner (Vice President), Elyse Kennard, Brandee Martin-Horton (President), Laura Leonardo Ownby (Secretary), Anthony Tumea (Treasurer).

Legal Counsel: Derek M. Johnson

+ Member of Actors’ Equity Association, the Union of Professional Actors and Stage Managers

^ Member of United Scenic Artists, Local 829



Buffalo Theatre Ensemble Presents

The Wickhams: Christmas at Pemberley

by **Lauren Gunderson and Margot Melcon**

Director

Connie Canaday Howard+*

Original Music & Sound Design

Christopher Kriz+^

Scenic Design

Jacqueline and Richard Penrod^

Costume, Hair, Makeup Design

Aly Greaves Amidei+^

Properties Design

Isa Noe

Lighting Design

Conchita Avitia

Violence Director

Neil Massey‡

*Interim Managing Artistic
Director*

Amelia Barrett+*

Interim Associate Artistic Director

Daniel Millhouse*

+ Member of Buffalo Theatre Ensemble ^ Member of United Scenic Artists, Local 829

* Member of Actors' Equity Association, the Union of Professional Actors and Stage Managers
‡Member of Stage Directors and Choreographers Society

There will be one 15-minute intermission

Please note: Adult themes and language.

Presented by Dramatists Play Service, Inc.

The use of any recording device, either audio or video, and the taking of photographs, either with or without a flash is strictly prohibited. Please turn off all electronic devices, such as cell phones and watches.



Nov 14 – Dec 15, 2024 | Playhouse Theatre

CAST

Mrs. Reynolds	Kelli Walker+
Brian	Beck Damron
Cassie	Jamila Joiner*
Mr. Fitzwilliam Darcy	Robert Hunter Bry
Mrs. Elizabeth Darcy	Paige Klopfenstein
George Wickham.....	Daniel Millhouse*
Lydia Wickham	Danielle Kerr

+ Member of Buffalo Theatre Ensemble

* Member of Actors' Equity Association, the Union of Professional Actors and Stage Managers

Place: The lower floor of the grand Pemberley Estate, particularly the common room where servants gather and eat.

Time: December, 1815.

DIRECTOR'S NOTE

It's 1815, two years after the conclusion of Jane Austen's *Pride and Prejudice*. In this play, the second in a trilogy by Gunderson and Melcon, we are again at Lizzie and Fitzwilliam Darcy's home, Pemberley, for the Christmas holidays. In a very fun convention, the action of this play is happening at the same time downstairs, in the servants' common room, as the action with the Bennet family Christmas upstairs, which BTE produced beautifully last year in *Miss Bennet: Christmas at Pemberley*.

It is in these 'below' rooms that those who keep Pemberley running smoothly can eat and relax, but it is also a working room. It is warm and active; Pemberley is also their home, and they are a proud part of the life of the estate. Mr. Darcy, as a boy, also spent much time in the common room, enjoying friendships and camaraderie with many who lived below stairs. You will soon meet some of those who work for the Darcys, through the play's focus, as well as a sworn enemy of Mr. Darcy.

These characters are full of life: laughter, surprise, intrigue and much love. The celebration of relationships which support one another, and, of course, because it is the Bennet/Darcy clan, of familial relationships, as well as the need to stand up for what's right - for both one's self and for those we care about - make this play both satisfying and heart-warming.

~CCH

ACKNOWLEDGEMENTS

THE WICKHAMS: CHRISTMAS AT PEMBERLEY was produced by Northlight Theatre (BJ Jones, Artistic Director; Timothy J. Evans, Executive Director) in Chicago, Illinois, in November 2019. It was directed by Jessica Thebus, the set design was by William Boles, the costume design was by Izumi Inaba, the lighting design was by Christine A. Binder, the sound design was by Kevin O'Donnell, and the production stage manager was Katie Klemme.

THE WICKHAMS: CHRISTMAS AT PEMBERLEY was produced by the Jungle Theater (Sarah Rasmussen, Artistic Director) in Minneapolis, Minnesota, in December 2018. It was directed by Christina Baldwin, the set design was by Chelsea M. Warren, the costume design was by Sarah Bahr, the lighting design was by Marcus Dilliard, the sound design was by Sean Healey, and the production stage manager was Jamie J. Kranz.

THE WICKHAMS: CHRISTMAS AT PEMBERLEY was produced by Marin Theatre Company (Jasson Minadakis, Artistic Director; Keri Kellerman, Managing Director) in Mill Valley, California, in November 2018. It was directed by Megan Sandberg-Zakian, the set design was by Wilson Chin, the costume design was by Courtney Flores, the lighting design was by Wen-Ling Liao, the sound design was by Sharath Patel, and the production stage manager was Kevin Johnson.

Acknowledgements

Buffalo Theatre Ensemble is partially supported and funded by generous grants from B2B Arts: Arts Illinois Alliance Resources, The DuPage Foundation, Benevity, Choose DuPage, The Norm Woodel Inspiration Fund, The Illinois Arts Council, and a gift from Dr. Thomas R. Scott and the late Shirley Klein Scott of Glen Ellyn through the College of DuPage Foundation and the generous support of the College of DuPage Trustees.



PRODUCTION STAFF

Stage Manager	Caitlin I. Quinn*
Assistant Stage Manager.....	Vinny Scanio
BTE Stage Management Scholar	Emily Sheehan◇
ASL Coordinator	Marijo Fiacchino
ASL Interpreters	Marijo Fiacchino, Laura Kostomiris
Technical Director	Caitlyn Woods
Scene Shop Manager	Sabrina Zeidler
Scene Shop Crew.....	Sameer Datta, MeiXi DiBernardo, Trinity Feliciano, Brandon Delgado Gomez, Keira Hernandez, Mack Lechtenberg, Vinny Scanio, Emily Sheehan◇, Harry Smith, Kaden Van Lerberghe
Costume Shop Manager.....	Kimberly G. Morris
Assistant Costume Shop Manager	Gretchen Woodley
Costume Shop Assistants	Lynn Borge, Courtney Lilly, Eleanor Evans, Will Lech, Z Fritz, Natalie Cross
Wardrobe	Natalie Cross
Scenic Charge Artist	Jessie Howe
Infection Control Safety Managers ..	Amelia Barrett*+, Daniel Millhouse*
Dialect Coach	Amelia Barrett
Assistant Dialect Coach	Daniel Millhouse

Buffalo Theatre Ensemble Director and Acting Shadows

This is an invited opportunity for select students who are working at the level of at least Acting II and/or Directing to shadow a theater professional and gain meaningful insight into developing a character.

Acting Shadows..... Breanna Auriemme, Taylor Baird, Morgan Erickson,
Micheal Guzman, Hannah Grimm, Jimmy Kalal, Neela Lugo

+Member of Buffalo Theatre Ensemble

* Member of Actors' Equity Association, the Union of Professional Actors and Stage Managers

◇Buffalo Theatre Ensemble Stage Management Scholarship Recipient

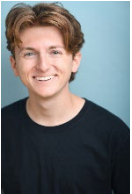
CAST PROFILES



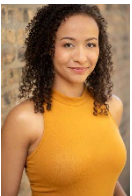
Robert Hunter Bry (Mr. Fitzwilliam Darcy) is thrilled to be returning to Buffalo Theatre Ensemble to reprise the role of Darcy after last year's *Miss Bennet: Christmas at Pemberley!* Chicago Theatre credits include: *Twelfth Night* (Chicago Shakespeare Theatre), *Hay Fever*, *The Virginian* (City Lit), *King Lear* (Redtwist Theatre), *The Firestorm* (First

CAST PROFILES

Folio), *Twelfth Night* (Midsommer Flight), *Lift Every Voice* (Collaboraction), and *Candida* (ShawChicago). Regionally he has performed onstage with Shakespeare Theatre of New Jersey, Montana Shakespeare in the Parks, Illinois Shakespeare Festival, Michigan Shakespeare Festival, and Arkansas Shakespeare Theatre. Film credits include: *The Fabulists*, *The Disorder of Tenebris*, *Painbroker*, and *Zombie*. Bry is a graduate of Illinois State University's undergraduate acting program and is represented by Shirley Hamilton Talent. He would like to thank his wonderful family and friends for their unwavering support! IG: @roberthunterandbry



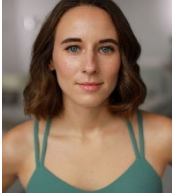
Beck Damron (Brian) is stoked to be back at Buffalo Theatre Ensemble! Chicago: *Peter & the Starcatcher* (Paramount Theatre), *Andy Warhol's Tomato* (Buffalo Theatre Ensemble), *Nana* (Trapdoor Theatre), *A Christmas Carol* (Metropolis PAC). Regional: *Comedy of Errors*, *Measure for Measure* (Hoosier Shakespeare Festival), *A Midsummer Night's Dream* (Dunes Summer Theatre), *Hair* (Nebraska Repertory Theatre) and *The Tempest* (Saratoga Shakespeare Festival). Damron is proudly represented by DDO Artist Agency Chicago. IG: @Beckdamron_, Beckdamron.com



Jamila Joiner* (Cassie) is excited to make her Chicago and Buffalo Theatre Ensemble debut with this heartwarming holiday story! Joiner has been a principal performer in notable Minnesota productions such as *All American Boys* (Stages Theater), *Reboot* (Walking Shadow Theater), *The Mystery of Edwin Drood* (Lyric Arts Theater), *Mary Poppins* (Artistry Theater), and *Cinderella* (Sidekick Theater). Her talent has also been showcased in ensemble work, including *Gloria: A Life* (History Theater) and *Spring Awakening* (The Chameleon Theater Co.). Joiner has portrayed a range of characters in various genres, from classic dramas like *Antigone* (Park Square Theater), *A Christmas Carol* (Guthrie Theater), and *Rigoletto* (Minnesota Opera) to contemporary works like *Teen Idol: A Bobby Vee Story* (History Theater). Joiner graduated from the University of Minnesota-Twin Cities with a BA in Theater Performance Creation with a focus in Musical Theater. She would like to thank her friends and family for their support and the artistic team at

CAST PROFILES

BTE for this wonderful opportunity. Joiner is a proud member of the Actors Equity Association and is represented by Shirley Hamilton Talent. @jamilajoiner, www.jamilajoiner.com



Paige Klopfenstein (Mrs. Elizabeth Darcy) is pleased as punch to be back at Buffalo Theatre Ensemble for this next unfolding of *Christmas at Pemberley*. Recent credits include *Silent Sky* (Citadel Theatre, U/S), *Miss Bennet: Christmas at Pemberley* (Buffalo Theatre Ensemble), *Collected Stories* (Oil Lamp Theater), *Our Town* (Asolo Repertory Theatre), *Julius Caesar* (FSU/Asolo Conservatory), *A Midsummer Night's Dream* (North Dakota Shakespeare Festival), and *The Flick* (Dobama Theatre). She received her MFA in Acting from FSU/Asolo Conservatory. With all the love and deep thanks to the Home Team, xo.



Danielle Kerr (Lydia Wickham) is thrilled to be back at Buffalo Theatre Ensemble this holiday season after playing Lydia in *Miss Bennet: Christmas at Pemberley* last year. Recent credits include *The Bridges of Madison County*, *Vanya and Sonia and Masha and Spike*, *A Grand Night for Singing* (Dunes Summer Theatre), *The Curious Incident of the Dog in the Nighttime* (MadKap), *The ThreePenny Opera* (Theo Ubique), *Dooby Dooby Moo* (Lifeline Theatre), and *National Merit* (BoHo Theatre). Kerr is a recent graduate of Northwestern University, where she received a BA in Theatre, a certificate in Music Theatre and a minor in English. She is represented by BMG Talent. Thank you so much to her family for their love of Jane Austen and their endless support. Daniellemkerr.com



Daniel Millhouse* (George Wickham) is grateful and thrilled to be returning to Buffalo Theatre Ensemble for his fifth production! Previous productions with BTE include *Miss Bennet: Christmas at Pemberley*, *The 39 Steps*, *Napperville* (Stage Manager), and *Season's Greetings* (Stage Manager). Chicago Theatre: Buffalo Theatre Ensemble, The Shakespeare Project of Chicago, ShawChicago, A Crew of Patches, Remy Bumpo, and The Second City Training Center. Regional Theatre: Michigan Shakespeare Festival, Idaho Shakespeare Festival, Great Lakes Theatre,

CAST PROFILES

and Great River Shakespeare Festival. Film/TV: *Chicago Fire*. Motion Capture: *Call of Duty* Video Game Franchise. Podcasts: *The Vanishing Act* and *The Onion's: The Topical*. Education: MFA in Acting/Directing - University of Wisconsin-Madison; BS - Eastern Michigan University. Millhouse is the Interim Associate Artistic Director for BTE, an Assistant Professor at the College of DuPage, a proud member of AEA, and is represented by Big Mouth Talent. Check out more information on his website at www.danielmillhouse.com.



Kelli Walker+ (Mrs. Reynolds) has appeared in *Into the Earth With You*, *Clybourne Park*, *Naperville*, *Miracle on South Division Street*, *The Ding Dong*, *Outside Mullingar*, *Good People*, *The Underpants*, *Frozen*, and *Love Song* (Buffalo Theatre Ensemble, ensemble member); *Native Gardens* (Williams Street Repertory, U/S, performed); *Into the Breeches* (iambe theatre ensemble); *The Humans*

(Redtwist Theatre); *A Doll's House* (Raven Theatre); *Roast* and *In the Wake* (The Comrades); and *Angry F*gs* (Steppenwolf Garage/Pride Films and Plays). Understudy roles include *For Peter Pan on Her 70th Birthday* (Shattered Globe); *Roz and Ray* (Victory Gardens Theater); *Caught*, and *Stupid F#cking Bird* (Sideshow Theatre Company). Select Indianapolis credits include *Stuff Happens*, *Boston Marriage*, *Proof*, *The Vagina Monologues*, and the one-woman show *Callie's Tally* (Phoenix Theatre); *The Living, Arms and the Man*, and *Romeo and Juliet* (Edyvean Repertory Theatre); *Wit* (Purdue University symposium with Pulitzer Prize-winning playwright Margaret Edson). Walker graduated from Butler University and Northern Illinois University.

UNDERSTUDY PROFILES



Peter Alfano (Understudy Brian) is so excited to work with Buffalo Theatre Ensemble for the first time. Recent credits include *Almost Maine* (Village Theatre Guild); *Waiting for Godot* (The Black Box Theatre), *Noises Off*, *The Crucible*, *The Three Musketeers*, and *The Accidental Death of an Anarchist* (The Brunner Theatre Center).

Alfano received a BA in Theater and Biology from Augustana College and an MBS from Midwestern University. When not exploring his love for theater, he works as a researcher at Midwestern University. He would

UNDERSTUDY PROFILES

like to thank BTE for this wonderful opportunity as well as his fiancé, friends, and family for their support.



Zachary Currie (Understudy George Wickham) is thrilled to make his debut with Buffalo Theatre Ensemble. Recent regional credits include *The Complete Works of William Shakespeare Abridged* (Ozark Players) and *A Christmas Carol* (Theatresquared). He is a graduate of the University of Arkansas with a Bachelor of Arts in Theatre Performance. He would like to thank his parents for their continued support.



Ksa Curry (Understudy Cassie) is so excited to be working with Buffalo Theatre Ensemble on this delightful Austenian story! Recent Chicago credits include *Mary's Wedding* (Oil Lamp Theater), *The Revolutionists* (Oil Lamp Theater), *Skunk and Badger* (Lifeline Theater), and *Hershel and the Hanukkah Goblins* (Strawdog Theater). Recent regional theater credits include *Once* (San Luis Obispo Repertory Theater), *Mother Road* (PCPA Pacific Conservatory Theater), and *Secret Garden* (PCPA Pacific Conservatory Theater). She is a graduate of PCPA's Acting Conservatory and Chico State University. Curry is represented by Lily's Talent. She's forever grateful to her family, her partner, and her little black cat Bridget for all of their support, and to Buffalo Theater Ensemble for this wonderful opportunity! www.ksacurry.com



Rylan Johnson (Understudy Mr. Fitzwilliam Darcy) is incredibly excited to work with Buffalo Theatre Ensemble! Recent credits include *A Midsummer Night's Dream*, *Life is a Dream*, *God of Carnage*, and *You are You* (RUR) (Northern Illinois University) and *Clue: On Stage* and *Macbeth* (College of Dupage). Johnson recently graduated from Northern Illinois University with a BFA in Acting. He would like to thank his family, friends, and all those close to him for being super supportive! www.theactorintheroy.com.

UNDERSTUDY PROFILES



Jenny Hoppes (Understudy Mrs. Elizabeth Darcy) is ecstatic to return to Buffalo Theatre Ensemble with this beautiful show. She understudied Anne DeBourgh last winter, and is overjoyed to continue sharing the stories of the Bennet girls. Notable theatrical credits: Ursula/Sexton in *Much Ado* and Vanessa U/S in *Nativity Variations* (Milwaukee Rep), Lina U/S in *Cry it Out* (Oil Lamp Theater), Hedy in *Garters* (Otherworld Theater). Overwhelming gratitude to the cast, crew, Amelia and Connie. Thanks to family, friends, and Kenny for their undying support!
Jennyhoppes.com



Tina Shelly (Understudy Mrs. Reynolds) is excited to be back at Buffalo Theatre Ensemble this season. She was previously seen as Rachel in *Season's Greetings* and understudied *Clybourne Park* the same season. Some favorite roles have been Corryn in *Gidion's Knot*, Ariel in *Coastal Disturbances* and Rosemary in *Rosemary With Ginger*. She is the proud Artistic Director of Habakkuk Theatre.
www.tinashelley.net



Leela Watts (understudy Lydia Wickham) is so excited to be working with Buffalo Theatre Ensemble this season, after having understudied for *Miss Bennet: Christmas at Pemberley* last year. Watts has recently appeared in *The Siren Song of Stephen Jay Gould* (Director's Haven 7); *Personal Library* (Ego Death Theatre Collective); and *Much Ado About Nothing*, *Much Ado About Quite a Lot* and *King Lear* (Illinois Shakespeare Festival). Watts holds a BA in Acting from Illinois State University. She would like to thank her wonderful and supportive parents, and her little dog Wybie. leela-watts.com @inleeland.



THANK YOU TO *Our Sponsors*

Ba||[®]

 **BROOKDALE**
GLEN ELLYN
SENIOR LIVING SOLUTIONS

Illinois
ARTS
Council

DuPage
Foundation **DF**




DOUBLETREE
by Hilton[™]
LISLE NAPERVILLE

**Frank Modruson
& Lynne Shigley**

Anonymous

**Sullivan Taylor
Family Trust**

College of DuPage
FOUNDATION

enjoy
illinois

PLAYWRIGHT PROFILES

Lauren Gunderson is one of the most produced playwrights in America since 2015 topping the list thrice including 2022-2023. She is a two-time winner of the Harold and Mimi Steinberg/ATCA New Play Award for *I and You* and *The Book of Will*, the winner of the Lanford Wilson Award and the Otis Guernsey New Voices Award, a finalist for the Susan Smith Blackburn Prize, the Arthur L. Weissberger Award, and John Gassner Award for Playwriting. Her musical adaptation of *The Time Traveller's Wife* premieres on the West End this fall. *Revolutionary Women*, her new anthology of five plays, was published by Bloomsbury in 2023. She studied Southern Literature and Drama at Emory University and Dramatic Writing at NYU's Tisch School of the Arts where she was a Reynolds Fellow in Social Entrepreneurship. Her play *The Catastrophist*, about her husband virologist Nathan Wolfe, premiered digitally in January 2021 and is now in The COVID Art Capsule in the Library of Congress. She co-authored the *Miss Bennet* trilogy with Margot Melcon. *The Half-Life of Marie Curie* premiered Off-Broadway and at Audible.com. Her work is published at Playscripts (*I and You; Exit Pursued by a Bear; The Taming; and Toil and Trouble*), Dramatists Play Service (*The Revolutionists; The Book of Will; Silent Sky; Bauer; Natural; Shocks; The Wickhams; Miss Bennet; and Georgiana and Kitty*), and Samuel French (*Emilie*). Her picture book, *Dr Wonderful: Blast Off to the Moon* is available from Two Lions/Amazon. She is the bookwriter for musicals with Dave Stewart and Joss Stone (*The Time Traveller's Wife*), Ari Afsar (*Jeannette* and *I and You*), Jorjah Kwamé (*Sinister*), Kira Stone (*Built for This*) and Kait Kerrigan and Bree Lowdermilk (*Justice* and *Earthrise*). She is a board member of The Playwrights Foundation and a member of the Aspen Institute Science and Society cohort.
www.laurengunderson.com

Margot Melcon is an artist, arts administrator and writer and co-wrote the Christmas at Pemberley trilogy (*Miss Bennet, The Wickhams, and Georgiana and Kitty*) with Lauren Gunderson. She was the Director of New Play Development at Marin Theatre Company for seven years, where she dramaturged over 30 productions—including six world premieres—and administered the company's two annual new play prizes and commissioning program. She has developed plays with TheatreWorks, Bay Area Playwrights Festival, Crowded Fire Theater, Shotgun Players, Berkeley Rep's Ground Floor, the Kennedy Center, the New Harmony Project, and The Playwrights' Center in Minneapolis. She

PLAYWRIGHT PROFILES

currently manages arts and culture grantmaking at the Zellerbach Family Foundation. Melcon is a graduate of California State University, Chico, and lives in San Francisco with her family.



ARTISTIC DIRECTOR PROFILES

Amelia Barrett*+ (Interim Managing Artistic Director) has acted, directed and coached dialect for many Buffalo Theatre Ensemble productions, most recently directing *Miss Bennet: Christmas at Pemberley*. She is a proud member of the acting ensemble and calls the theater her artistic home. As an actor, she has appeared with other local, regional, and international companies. She is Chair of the College of DuPage Theater Department, where she has directed well over 60 productions. She is a proud member of Actors' Equity Association as well as the Screen Actors Guild and the American Federation of Radio and Television Artists. She holds a Master of Fine Arts degree in acting from the University of Texas at Austin and a Graduate Certificate in Laban Movement Analysis from Columbia College Chicago.

Daniel Millhouse* (Interim Associate Artistic Director) is grateful and thrilled to be joining Buffalo Theatre Ensemble as Interim AAD having worked with BTE as an actor and stage manager since 2016. Previous productions with BTE as an actor include *Miss Bennet: Christmas at Pemberley* and *The 39 Steps*, and as a stage manager for *Naperville* and *Season's Greetings*. Beyond BTE his theater credits also include shows

ARTISTIC DIRECTOR PROFILES

with the Michigan Shakespeare Festival, Great Lakes Theater, Idaho Shakespeare Festival, Shakespeare Project of Chicago, Remy Bumppo, A crew of Patches, ShawChicago, and Second City Training Center. You may also recognize him from his work on the *Call of Duty* video game franchise or his episode of *Chicago Fire*. You can also hear his voice on podcasts as well, including *The Vanishing Act* and The Onion's *The Topical*, to name a few. Millhouse is an Associate Professor at the College of DuPage where he directs productions for College Theater. He received his MFA in Acting/Directing from the University of Wisconsin-Madison and his BS in Theater Arts from Eastern Michigan University. He is a proud member of Actors' Equity Association. Prior to BTE, Millhouse co-founded and served as Managing Director for Misalliance Repertory Theatre.

ARTISTIC PROFILES

Aly Greaves Amidei (Costume Designer) is a costume designer, playwright, and an Associate Professor of Design at the University of Wisconsin-Madison. Recent BTE work includes *Miss Bennet: Christmas at Pemberley*, *Andy Warhol's Tomato*, *Season's Greetings*, *The Cake*, and *Improbable Fiction*. Her costume and makeup designs have also been featured at Lifeline Theatre, Strawdog Theatre Company, Michigan Shakespeare Festival, Steep Theatre, Magic Theatre of San Antonio, Lakeside Shakespeare, Irish Theater of Chicago, DuPage Opera, Stage Left, Artistic Home, House Theater of Chicago, Teatro Vista, Collaboraction, and Vitalist Theater. Previously, she worked for fifteen years as the costume and makeup coordinator for the College of DuPage theater and dance department and as a professor at UNC-Charlotte for seven years. Upcoming shows include *Cinderella* at Children's Theatre of Madison and *Pride and Prejudice* at UW-Madison.

Conchita Avitia (Lighting Designer) is a freelance Mexican-American lighting designer based in Chicago and holds a BA in Theatre Design from Columbia College Chicago. She is excited to be making her BTE debut on *The Wickhams: Christmas at Pemberley*. Recent work includes: *Happy Days Are Here (Again)*, *Paris* [Co-Designed] (Steep Theatre); *The Brightest Thing in the World* [Jeff Nomination-Lighting Design Midsize], *Mosque4Mosque* (About Face Theatre); *Chlorine Sky* [Co-Designed]

ARTISTIC PROFILES

(Steppenwolf Theatre Company); *Ruth on the Rocks*, *The Wizards* (Concrete Content); *Mothering the Movement*, *Tenemos Un Futuro/There Is A Future*, *57 Blocks* (Free Street Theatre); *In His Hands* (First Floor Theatre); *-iBernarda!*, *The Dream King* [Jeff Award 2023 Recipient-Lighting Design Midsize] (Teatro Vista Productions). Avitia is also a proud member of Teatro Vista Productions New Artistic Collective. For updates and production photos please visit: avitalighting.com

Connie Canaday Howard*+ (Director), after 24 years as Managing Artistic Director for BTE, has recently stepped out of leadership for the Company, though she is excited to continue as a dedicated Ensemble member. Canaday Howard has directed numerous productions for BTE, with some favorites being *Time Stands Still*, *Rabbit Hole*, *Noises Off*, *Into the Woods*, and *Dancing at Lughnasa*. She is also a member of BTE's acting ensemble, most recently playing Peg in *The Outgoing Tide* and Della in *The Cake*. Canaday Howard holds a MFA in Directing, and has worked regionally with Three Rivers Shakespeare Festival, City Theatre Company, Belvoir Terrace, Drama Workshop, Down River Dinner Theatre, Ingersoll Theatre, Charlie's Showplace, and tours of both theatre and dance, as well as helping to create and perform several improvisational shows. She is a proud member of Actor Equity Association. She serves on the Artistic Team of the Joseph Jefferson Committee, and, while a professor, also adjudicated for the Kennedy Center American College Theatre Festival (KCACTF). Canaday Howard is retired as Chair/Professor of the Theatre Department at the College of DuPage, where she directed countless productions, including some favorites of *The Addams Family*, *Joe White and the Seven Dwarves*, *Taming of the Shrew*, and *The Living*. She received COD's Outstanding Faculty in 2004, and served as the Illinois IAI co-chair of the Theatre committee for nearly two decades.

Jacqueline^ & Richard Penrod^ (Scenic Design). The Penrod's are very happy to be working with Buffalo Theatre Ensemble on this production of *The Wickhams: Christmas at Pemberley*, where they also designed the set for the BTE production of *The Outgoing Tide* last season. Recent productions include *Big River* for the Mercury Theater. Their award-winning design work has been seen locally and regionally. Some favorite productions include: *Miss Bennett: Christmas at Pemberley* at Northlight

ARTISTIC PROFILES

Theatre, *Frida: a Self Portrait* at Cincinnati Playhouse in the Park, Portland Center Stage and Kansas City Rep. *Around the World in Eighty Days* for Lookingglass Theatre, *Eclipsed* for Pegasus Theatre, *Richard III* for The Gift Theater produced at Steppenwolf Theatre; *Stick Fly* for Windy City Playhouse; *Welcome Home Jenny Sutter* for Next Theatre Company; and *Pygmalion* and *Love and Information* for Remy Bumpo Theatre Company. They are members of United Scenic Artists local 829. Jackie Penrod recently completed a short puppet piece as part of the Chicago International Puppet Theater Festival's Chicago Puppet Lab. Find out more at www.penroddesign.com

Christopher Kriz⁺ (Original Music and Sound Design) is a composer and sound designer based in Chicago and an Ensemble Member with BTE. Recent BTE designs include *The Outgoing Tide* (2 Jeff Nominations), *The Outsider*, *Into the Earth With You*, *Andy Warhol's Tomato*, and many more. Chicago design credits include: Goodman Theatre, Steppenwolf, Chicago Shakespeare, Chicago Symphony Orchestra, Court Theatre, Paramount Theatre, TimeLine Theatre, Remy Bumpo, Victory Gardens, Northlight Theatre, Shattered Globe, and many others. Regional: Seattle Repertory Theatre, Kansas City Repertory Theatre, Indiana Repertory Theatre, Alabama Shakespeare Festival, Peninsula Players, American Stage Theatre, Crossroads Theatre, TheatreSquared, Montana Shakespeare, Nebraska Repertory Theatre, Michigan Shakespeare Festival, and others. A winner of five Joseph Jefferson Awards, Kriz is a proud member of United Scenic Artists 829. To hear more of his work, please visit christopherkriz.com

Neil Massey[‡] (Violence Director) Massey is a Certified Teacher in the Society of American Fight Directors and has been involved in stage combat for over 30 years as a performer, choreographer, and teacher in the US and abroad. Massey has served on the Governing Body of the SAFD, as Assistant Coordinator for the National Stage Combat Workshop at UNLV, and as Coordinator for Winter Wonderland Workshop, the Chicago Regional Stage Combat Workshop. Locally he has taught stage combat at Roosevelt University, DePaul University, Columbia College, and College of DuPage. His choreography has been seen on various stages throughout Chicago, including Chicago Shakespeare, The Goodman, Steppenwolf, and others. He is thrilled to return to Buffalo Theatre Ensemble for another production. An accomplished sword

ARTISTIC PROFILES

cutler, his company, Rogue Steel, supplies theatres, universities, and individuals all over the world with high quality stage combat equipment.

Isa Noe (Props Designer) is delighted to work with Buffalo Theatre Ensemble again this season. Recent Chicagoland design credits include *Dear Elizabeth* (Remy Bumppo Theatre Company), *Never Better* (Theo Ubique Cabaret Theatre), *Mary's Wedding* and *Rooted* (Oil Lamp Theatre), and *Skunk and Badger* (Lifeline Theatre). Noe received their Bachelor of Arts from Northwestern University with a focus in scenic design. They would like to thank their family, mentors, and partner for their loving encouragement and unwavering support. www.ign-design.com

Dining Partners

Eat, drink & enjoy -
MAC dining partners

For all your pre-show meals and post-show bites, we are thrilled to be partnering with these neighborhood restaurants. Our dining partners offer MAC patrons exclusive discounts and special offers. All MAC ticket orders receive coupons to these local favorite restaurants!



STAGE MANAGER PROFILES

Vinny Scanio (Assistant Stage Manager) This is Scanio's first experience as a professional assistant stage manager and he could not be more excited! Previous Buffalo Theatre ensemble credits include *Andy Warhol's Tomato* (student shadow for Mario 'Bones' Bonino) and *The Outgoing Tide* (student shadow for Gunner). Scanio is also a former recipient of the John Belushi Stage Management scholarship. Previous management experience includes *Born Yesterday* (stage manager) at the College of DuPage.

Emily Sheehan ♦ (BTE Assistant Stage Manager Scholar) is excited to be working with BTE! Previous stage management experiences: *Once Upon A Mattress* (Stage manager), *Twelfth Night* (Stage manager), and *Mystery of Edwin Drood* (Assistant stage manager). Sheehan is a recipient of the John Belushi stage management Scholar, John Belushi/Second City Scholar, and a John Belushi Choral Scholar.

Caitlin I. Quinn* (Stage Manager) is excited to make her debut at Buffalo Theatre Ensemble! She is proud of her stage management work on *The Addams Family*, *Little Shop of Horrors*, and *Any Other Name* at Williams Street Rep. With more than 15 years of prior theatre experience, it's always thrilling to work somewhere new. Special thanks to her partner, Jim, also to Connie, Amelia and the BTE team for welcoming her on this journey of collaboration.

+ Member of Buffalo Theatre Ensemble

* Member of Actors' Equity Association, the Union of Professional Actors and Stage Managers

^ Member of United Scenic Artists, Local 829

#Member of Stage Directors and Choreographers Society

Buffalo Theatre Ensemble's mission is to provide a forum in which artists, scholars, writers, students and community members explore new ideas and provocative issues through the production of quality theatre for the enjoyment of its audiences.



Buffalo Theatre Ensemble (“BTE”) is a 501(c)(3) not for profit, professional theatre company in residence at the McAninch Arts Center (“MAC”) on the campus of College of DuPage.

Ticket revenue only covers a portion of Buffalo Theatre Ensemble’s operating expenses. The rest must be raised through contributions, the majority of which comes in the form of gifts from individuals like you.

It’s because of our close circle of friends that BTE is able to return and explore new ideas and provocative issues through the production of professional, high quality theater for the enjoyment of its audiences.

The resident ensemble brings professional theater to DuPage County and at the same time enhances the training of students in Theater at College of DuPage, providing opportunities for students to develop their talents alongside working theater artists.



Scan this code to give today!

Buffalo Theatre Ensemble is a designated 501(c)(3) not-for-profit organization. Your donation may be tax deductible to the extent permitted by law. Please check with your tax advisor.

**The MAC offers all of this for you,
but we can’t do it without you!**

**YOUR GIFT HELPS PROVIDE CULTURAL
VITALITY THAT ENRICHES AND ENTERTAINS!**

GIVE TODAY! TO SUPPORT THE MAC
visit us at foundation.cod.edu or call (630) 942-3088

FRIENDS OF THE BUFFALO THEATRE ENSEMBLE

For 38 years, Buffalo Theatre Ensemble (BTE) has played a major role in the cultural community of College of DuPage and the surrounding area, through the marriage of committed permanent ensemble members, fine Chicagoland artists, and great theatrical works. We gratefully acknowledge the donors who have made it possible to return for our 38th season.

This list of donors reflects contributions made from January 2020 through September 2024. While we carefully prepared this listing, we recognize that errors may occur. Please accept our apology if you are not properly represented on this list and contact BTE at ab@btechicago.com so we may correct our records.

Benefactor (\$3000 and above)

Anonymous
Robert Bailey
Katherine Balek
Connie Canaday
Howard
Cleve E. Carney Fund
DuPage Forever Fund
DuPage Foundation
Jean Hawkinson
Illinois Arts Council
Joseph and Beth
Kindlon Fund
Maggie & Mike McCoy
Karen Owen
John K. Rutledge &
Betty Joseph
Thomas Scott
Scott Vessely
Kathy Wessel
Donald Westlake
Norman Woodel

Charlene Kornoski-Duvall
Larry Larson
Paula Chuchro and
James Lenihan
Harold & Karyl
McAninch
Kathleen McCullough
David J. and Donna M.
Millhouse
Mrs. Joseph Morrissey
Salesforce.com Inc
Sandra Sansone
Brennan
Randy Johnson & Lisa
Savegnago
Kristin & Peter
Shulman
James & Linda
Smedinghoff
Linda & Barry Tusin
Bonnie M. Wheaton

Nancy Headen
Richard Jarman
Cynthia Ann & Andrew
Johnson
Lou Ann Kaletka
Gayan
Barbara Kamm
John & Rita Meier
Kevin O'Brien
Carolyn & Eric
Oesterle
Tom & Karen Pulver
Tina Rudins
Barb & Doug Rundell
Kathy Schleicher
Haruo Kurokawa and
Hal Temple
Rich & Kathy Wilders
Robert Wunderlich
Erin & Jeff and Julie
Wymore
Mary Ann & Walt
Zlotow

Dream Maker (\$1000–\$2999)

Mary & Renato Bacci
Deborah Borge
Sharon Brockmeier
Peggy Connolly
John and Pamela
Dalby
Kathleen Drennan
Dr. James & Judy
Dunlap
Debra Fulks
Jon & Ruth Good
Art Hirsch

Imaginer (\$500–\$999)

Lynette Arendt
Michael Boyna
Gary Dobson
James and Marie
Drasal
Donald and Catherine
Fischer
Russell and Judy Flores
Phil & Amy Gelber
Glen Ellyn Chamber of
Commerce
Charles & Phyllis
Goodman
Ida Hagman
George and Mary Hall

Director's Circle (\$250–\$499)

Peggy Aldworth
Amelia Barrett
Bob and Betty Becker
John J. Bryant Fund
John E. & Suzanne R.
Buntrock
Patrice Conaway
Fran Kravitz
Fran Kravitz and
Daniel Edelman
Gary Harper
Bob & Sue Hartman
Richard & Mary Kuhn

FRIENDS OF THE BUFFALO THEATRE ENSEMBLE

John L. Ladle
 Martha McCoy
 Michael McKeon
 Carol & Michael Moon
 John M. Mulherin
 Michael J. and Melissa
 F. Nachman
 Gwen O'Loughlin
 Jim & Lorraine
 Paulissen
 Sarah & Roger
 Poeppel
 Kenneth Robin
 Gail Robinson
 Marlene & Robert
 Rosecrans
 Steve Scott
 Patricia Spence
 Gloria P. & Kennan R.
 Sullivan
 Jon Summerbell
 Nancy Svoboda
 Paul & Colleen Trinko
 Kelli Walker
 Larry Ward

Rising Star (\$50 to \$249)

Anonymous
 Christine Aument
 Joy & Bob Barrell
 Eugene Benner
 Blackbaud Giving Fund
 Peter Bostock
 James Boves
 Elaine Brodemus
 Joanne Brown
 Marcia & Arthur Burke
 Patrick and Joanne
 Callahan
 Bonnie Campbell
 Abbey Canaday
 Howard
 Larry & Karen
 Christensen
 Michael Church
 Allison Cohen
 Shiela Cosco
 Lisa Dawn Curran
 Barb Danvir Hepfer

Erin Diener Matull
 Julia Dilberti
 Victoria Donnelly
 LuEllen Doty
 Andrea Duffy
 Robert Dulski
 Marla Eglowstein
 Gary Ernst
 Sally & William
 Fairbank
 Ruta Freimanis
 Jackie Friedman
 Bonnie L. and Jeffrey
 L. Gahris
 Karen Gaydos
 Robin George
 Chris Gerrib
 Fran Gilles
 Peter Glassman
 Dawn Goldhirsh
 Craig D. Goldwyn
 John & Lisa Gorak
 Kathleen Graffam
 Elisabeth and Mark
 Grzywa
 Lisa Hada
 Cassy Harlo Schutz
 Rebekah & Rodney
 Harris
 Paul & Floy Haschke
 Edward M & Cindy L
 Hegarty
 James & Ann Helt
 John & Emily Herndon
 John C & Stephanie B
 Iglehart
 Jan T. and Kathryn
 Johansson
 Dennis Johnson
 Mary Johnson
 Bernard Jokiel
 Alisa Jordheim
 Jean Joslyn
 David Kee
 Kay & Rick Kehoe
 Thomas Kelly
 Virginia and Charles
 Klingporn
 Deborah Kolek

Mary Krska
 Linda Kulikowski
 Sally & Martin
 Kutesch
 Cynthia Laughlin
 Ida Lee
 Paul & Eileen Lefort
 Virginia Lennon
 Holly Malloy
 Tom Manak
 Corrine Marrinan
 Tripp
 Walter Martineau
 John Mategrano
 Rich Matheson
 Carolyn May
 David and Carolyn
 May
 Jacqueline McGrath
 Tom Mikrut
 Patricia Miller
 James Miloobowski
 Jane Moore
 Patricia Motto
 Frank Mraz
 Stanley Nardoni
 Network for Good
 Donald & Mary Ellen
 Newsom
 Jane Oldfield
 Jean R. and Joanne
 Oliphant
 Judith Olson
 Kenneth Orenic
 Dianne Paulini
 Mark Pfefferman
 Edward & Bernadine
 Pillar
 Pamela Pipkin
 Terra Stetz & Rita
 Potter
 Cynthia & Thomas
 Power
 Lynda Pratscher
 Joe Pundzak
 Pat Read
 Mary Ellen Reedy
 Carol & Alfred Reiman
 Gertrude Rigg
 Bruce Rodman

FRIENDS OF THE BUFFALO THEATRE ENSEMBLE

Judith Ronaldson
 Daniel F. and Barbara
 Roos
 Gail Root
 Renee Rose
 Susan Ross
 Gus & Georgia
 Rousonelos
 Jim Ruffing
 Mark Sand
 Mary Kay Schultz
 Patricia & Richard
 Schwarze
 Virginia Schweinberg
 and Family
 Wei Shissler

Donna Jean Simon
 Iona Simon
 Michael Sitrek
 M.D. & Laura Skeet
 Susan Spooner
 Stephen Squier
 Donald Stading
 Louis & Marilyn
 Steenwyk
 Helen Szymanski
 Kathleen Talenco
 Dr. and Mrs. Anthony
 Taylor
 Nancy and Kevin
 Taylor
 Joseph & Mary Beth
 Turek

Barbara Urick
 Alan L. & Linda K.
 Varney
 James & Carolyn
 Vondran
 Roy & Janice Wahnert
 Vince & Gloria Walsh-
 Rock
 James Weichel
 Werner Weiss
 Scott Wetle
 Bobbi & John
 Wheatley
 Mary Wiesen
 Tod D. Willman
 William Womack

Business Partners:

Adelle's
 Cabernet and Co.
 Club Pilates Glen Ellyn
 Emergence See
 Photography
 The Foxtail
 Fuschia Glen Ellen
 The MAC
 Gia Mia

The Gift Theatre
 Gindo's Spice of Life
 Health Track
 Hot Worx Wheaton
 Lewey Q's Tap, Beer,
 Pizza, Wine, Spirits
 Maise and Mash
 Mindful Movements
 Pilates & Yoga,
 Oil Lamp Theatre

Paramount Theatre
 Peet's Coffee Downers
 Grove
 Yoga Six Downers
 Grove
 Remy Bumpo
 Theatre
 Silver Fox Travel
 Skeleton Key
 Two Hound Red



BTE Board of Directors:

Margaret Aldworth, Robert Jordan Bailey, Amelia Barrett, Connie Canaday Howard, Ted Donner (Vice President), Elyse Kennard, Brandee Martin-Horton (President), Laura Leonardo Ownby (Secretary), Anthony Tumea (Treasurer).
Legal Counsel: Derek M. Johnson

Members Emeriti: Robert Cappetta, Peggy Connolly, Rebecca Cox, Lisa Dawn, Ida Hagman, Diane Hicks, Richard Jarman, Michael J. McCoy, Joan Morrissey, Kurt Naebig, Carolyn Oesterle, John K. Rutledge, Sandra Sansone Brennan, Colleen Trinko, Kelli Walker, Kathy Wessel, Bonnie Wheaton, Richard Wilders, Norm Woodel, Mary Ann Zlotow

STUDENT VOLUNTEERS

Nick Washington	Vinny Scanio	Olivia Reamer
Emily Sheehan	Ashley Chavez	Carolyn Goldsmith
Chris Yee	Elmeka Elme	

VOLUNTEERS

Peggy Aldworth	Julia DiLiberti	Caroline	Erin Lynn Ransford
Quinn Bayola	Melissa Donner	McGowan	Erica Sandvig
Debbie Borge	Andrea Ficarelli	Isola Metz	Debbye Simpson
Bill Bulger	The Late Joan	Barb Murphy	Nancy Svoboda
Benjamin	Frank	Jaden and Jeff	Donald Westlake
Caracello	Ken Frank	Ownby	Mary Ann Zlotow
Gayatri Choudhary	Rex Howard	Elaine Patrick	
Peggy Connolly	Paul LeFort	Tony Payne	
Christopher	Brett Mathieson	Pam Pipkin	
Corrigan	Maggie McCoy	Lynda Pratscher	



btechicago.com



facebook.com/BuffaloTheatreEnsemble



[BTEattheMAC](https://twitter.com/BTEattheMAC)

HOUSE NOTES

- Cameras and recording devices are not allowed in the theater and are prohibited by our contracts with the artists.
- Smoking is not permitted in the theater or on campus.
- For your comfort and security, all backpacks and large bags must be checked.
- Please turn off all cell phones and any other alarms while in the theater.
- Emergency phone number at College of DuPage Police Department for after-hour calls is (630) 942-2000.
- Latecomers seated at discretion of the House Manager.
- Groups of 10 or more may contact (630) 942-3026 or grouptix@cod.edu to arrange for group discounts.
- If you notice a spill in the theater, please notify an usher.
- McAninch Arts Center volunteers are people who assist the house staff in areas of ticket taking, ushering and general management during performances. To get involved, call (630) 942-3705.
- **For Americans with Disabilities Act** accommodations, call (630) 942-2141 (voice) or (630) 858-9692 (TDD).
- **Infrared Assistive Listening Devices:** For audience members who desire audio amplification of performances, headsets with individual volume controls are now available. You may check out the headsets at the Box Office with a driver's license. *Underwritten by a generous gift from The Knowles Foundation.*

MAC STAFF LISTING

MAC Administrative Staff

Director of the McAninch Arts Center	Diana Martinez
Business Manager	Cassi Fanelli
Project Manager	Kari Schoettle
Assistant Business Manager	Brianna Garcia
Curator, Cleve Carney Museum of Art	Justin Witte
Assistant Curator	Julia Walker
Marketing and Patrons Services Coordinator	Janey Sarther
Graphic Designer	Wendy Melgar
Director of Development for Cultural Arts	Jon Nadel
Education and Community Engagement Coordinator	Mandy Rakow
Office Manager/Events Coordinator	Morgan Bainbridge
Student Clerical Assistant	Kate Cadag

MAC Box Office and Front of House Staff

Box Office Manager	Julie Elges
Assistant Box Office Supervisors	Daniel Arzola, Elise Wash
Box Office Assistants	Patrick Garon, Joanne Hunt
Patron Services Manager	Tom Murray
Assistant Patron Services Supervisor	Deborah Kolek
House Manager/Volunteer Coordinator	Rob Nardini

MAC Resident Professional Ensembles

Buffalo Theatre Ensemble, Interim Managing Artistic Director	Amelia Barrett
Buffalo Theatre Ensemble, Interim Associate Artistic Director	Daniel Millhouse
Buffalo Theatre Ensemble, Business Manager	Bryan Burke
New Philharmonic, Music Director and Conductor	Kirk Muspratt
New Philharmonic, Associate Conductor and Librarian	Benjamin Nadel
New Philharmonic General Manager	Paula Cebula
New Philharmonic Personnel Manager	Karen Dickelman
New Philharmonic Assistant Librarian	Ryan Michel

MAC Design and Technical Staff

Technical Production/Lighting/Sound Coordinator	Richard Arnold, Jr.
Technical Theater Assistant Coordinator	Sabrina Zeidler
Costume and Make-up Design Coordinator	Kimberly G. Morris
Assistant Costume Coordinator and Stitcher	Gretchen Woodley
Production Manager	Joe Hopper
Sound and Lighting Specialist	Ben Johnson
Lighting Production Specialist	Elias Morales
Audio Production Specialist	Fisher Parsons
Events Production Specialist/Tech. Director – BTE	Caitlyn Woods
Stage Hands	Bobby Bryan, Zak Zubka